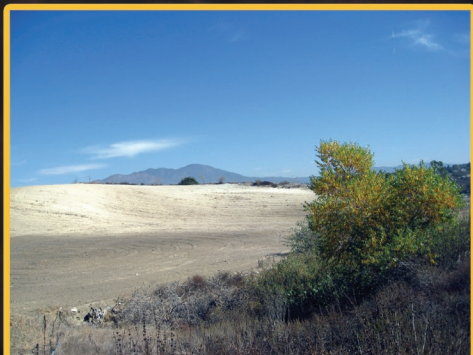


PUBLIC REVIEW DRAFT

Serrano Summit Area Plan 2009-01 and Tentative Tract Map No. 17331 ENVIRONMENTAL IMPACT REPORT

AUGUST 2011



Prepared for:
City of Lake Forest

Prepared by:
RBF Consulting

Administrative Draft EIR Completed:	July 5, 2011
Check Copy Draft EIR Completed:	August 3, 2011
Public Review Draft EIR Completed:	August 10, 2011
Final EIR Completed:	

**PUBLIC REVIEW DRAFT
ENVIRONMENTAL IMPACT REPORT**

**Serrano Summit Area Plan 2009-01
and Tentative Tract Map No. 17331**

SCH NO. 2011051009

Lead Agency:



CITY OF LAKE FOREST
25550 Commercentre Drive
Lake Forest, California 92630
Contact: Ms. Carrie Tai, AICP
Senior Planner
949.461.3466

Prepared by:



RBF CONSULTING
14725 Alton Parkway
Irvine, California 92618-2027
Contact:
Mr. Edward Torres, INCE
949.472.3505

August 10, 2011

JN 10-107199



TABLE OF CONTENTS

Section 1.0:	Introduction and Purpose	1-1
	1.1 Purpose of the EIR.....	1-1
	1.2 CEQA Document Tiering	1-2
	1.3 Compliance with CEQA	1-4
	1.4 EIR Scoping Process	1-5
	1.5 Format of the EIR.....	1-11
	1.6 Responsible and Trustee Agencies	1-12
	1.7 Incorporation by Reference.....	1-13
Section 2.0:	Executive Summary.....	2-1
	2.1 Project Location	2-1
	2.2 Project Setting (Existing Conditions)	2-1
	2.3 Background and History	2-6
	2.4 Project Characteristics	2-7
	2.5 Goals and Objectives	2-23
	2.6 Phasing/Construction.....	2-24
	2.7 Agreements, Permits, and Approvals	2-26
	2.8 Summary of Project Alternatives	2-26
	2.9 Environmental Issues/Mitigation Summary	2-34
Section 3.0:	Project Description	3-1
	3.1 Project Location and Setting.....	3-1
	3.2 Background and History	3-6
	3.3 Project Characteristics	3-7
	3.4 Goals and Objectives	3-23
	3.5 Phasing/Construction.....	3-24
	3.6 Agreements, Permits, and Approvals	3-26
Section 4.0:	Basis of Cumulative Analysis	4-1
Section 5.0:	Environmental Analysis.....	5-1
	5.1 Air Quality	5.1-1
	5.2 Greenhouse Gas Emissions.....	5.2-1
	5.3 Biological Resources	5.3-1
Section 6.0:	Other CEQA Considerations	6-1
	6.1 Long-Term Implications of the Proposed Project.....	6-1
	6.2 Irreversible Environmental Changes That Would Be Involved In The Proposed Action Should It Be Implemented.....	6-1
	6.3 Growth-Inducing Impacts	6-2
	6.4 Energy Conservation	6-7



TABLE OF CONTENTS (continued)

Section 7.0:	Alternatives to the Proposed Project.....	7-1
7.1	“No Project” Alternative.....	7-2
7.2	“Reduced Residential and Civic Center” Alternative.....	7-9
7.3	“Reduced Residential” Alternative.....	7-12
7.4	“Environmentally Superior” Alternative	7-16
7.5	Alternatives Considered But Rejected From Further Analysis.....	7-17
Section 8.0:	Effects Found Not To Be Significant	8-1
Section 9.0:	Inventory of Mitigation Measures.....	9-1
Section 10.0:	Organizations and Persons Consulted.....	10-1
Section 11.0:	Bibliography	11-1
Section 12.0:	Appendices (under separate cover and contained on CD at end of section)	
12.1	Initial Study and Notice of Preparation	
12.2	Notice of Preparation Responses	
12.3	Air Quality Assessment	
12.4	Greenhouse Gas Assessment	
12.5	Hydrology/Water Quality Supplemental Data	
12.6	Biological Resources Reports/Surveys	



LIST OF EXHIBITS

Exhibit 2-1	Regional Vicinity	2-2
Exhibit 2-2	Site Vicinity	2-3
Exhibit 2-3	Aerial Photograph.....	2-4
Exhibit 2-4	Existing Land Uses	2-5
Exhibit 2-5	Proposed Master Land Use Plan	2-8
Exhibit 2-6	Tentative Tract Map No. 17331	2-11
Exhibit 2-7	Proposed Master Plan of Parks, Trails, and Open Space.....	2-17
Exhibit 2-8	Proposed Conceptual Landscape Master Plan.....	2-20
Exhibit 2-9	Proposed Grading Concept Plan.....	2-22
Exhibit 2-10	Development Phasing Plan	2-25
Exhibit 3-1	Regional Vicinity	3-2
Exhibit 3-2	Site Vicinity	3-3
Exhibit 3-3	Aerial Photograph.....	3-4
Exhibit 3-4	Existing Land Uses	3-5
Exhibit 3-5	Proposed Master Land Use Plan	3-8
Exhibit 3-6	Tentative Tract Map No. 17331	3-11
Exhibit 3-7	Proposed Master Plan of Parks, Trails, and Open Space.....	3-17
Exhibit 3-8	Proposed Conceptual Landscape Master Plan.....	3-20
Exhibit 3-9	Proposed Grading Concept Plan.....	3-22
Exhibit 3-10	Development Phasing Plan	3-25
Exhibit 4-1	Cumulative Project Locations.....	4-5
Exhibit 5.3-1	Jurisdictional Features	5.3-36
Exhibit 8-1	Viewpoint Location Map.....	8-4
Exhibit 8-2	Viewpoint 1.....	8-5



LIST OF EXHIBITS (continued)

Exhibit 8-3	Viewpoint 2.....	8-6
Exhibit 8-4	Viewpoint 3.....	8-7
Exhibit 8-5	Viewpoint 4.....	8-8
Exhibit 8-6	Viewpoint 5.....	8-9
Exhibit 8-7	Viewpoint 6.....	8-10
Exhibit 8-8	Viewpoint 7.....	8-11
Exhibit 8-9	Viewpoint 8.....	8-12
Exhibit 8-10	Viewpoint 9.....	8-13
Exhibit 8-11	Existing Drainage Hydrology Map	8-43



LIST OF TABLES

Table 2-1	Area Plan Planning Areas	2-10
Table 2-2	Proposed Development for Tentative Tract Map No. 17731	2-13
Table 2-3	Comparison of Proposed Project and Reasonably Foreseeable Development – Development Agreement Alternative.....	2-28
Table 2-4	Comparison of Proposed Project and Reduced Residential and Civic Center Alternative.....	2-29
Table 2-5	Comparison of Project Alternative and Reduced Residential Alternative.....	2-30
Table 2-6	Comparison of Alternatives	2-31
Table 3-1	Area Plan Planning Areas	3-10
Table 3-2	Proposed Development for Tentative Tract Map No. 17731	3-13
Table 4-1	Cumulative Projects List.....	4-2
Table 5.1-1	Local Air Quality Levels	5.1-3
Table 5.1-2	National and California Ambient Air Quality Standards.....	5.1-6
Table 5.1-3	SCAQMD Regional Pollutant Emission Thresholds of Significance	5.1-8
Table 5.1-4	Localized Significance Thresholds	5.1-10
Table 5.1-5	Maximum Daily Pollutant Emissions During Construction.....	5.1-13
Table 5.1-6	Long-Term Operational Air Emissions	5.1-19
Table 5.1-7	Project Alternative Long-Term Operational Air Emissions.....	5.1-20
Table 5.1-8	Localized Significance of Emissions.....	5.1-22
Table 5.1-9	Project Buildout Carbon Monoxide Concentration.....	5.1-23
Table 5.2-1	Business As Usual Greenhouse Gas Emissions	5.2-15
Table 5.2-2	Project Consistency with GHG Emissions Reductions Strategies	5.2-16
Table 5.2-3	Mitigated Greenhouse Gas Emissions	5.2-18
Table 5.2-4	Project Alternative Business As Usual Greenhouse Gas Emissions.....	5.2-20



LIST OF TABLES (continued)

Table 5.2-5	Project Alternative Mitigated Greenhouse Gas Emissions.....	5.2-21
Table 5.3-1	Habitat Type and Vegetation Communities.....	5.3-2
Table 5.3-2	Special Status Plant Species Known to Occur in the Project Vicinity.....	5.3-9
Table 5.3-3	Special Status Wildlife Species Known to Occur in the Project Vicinity.....	5.3-20
Table 5.3-4	Jurisdictional Drainage Systems and Associated Wetlands.....	5.3-35
Table 6-1	Population Estimates.....	6-3
Table 6-2	Housing Estimates.....	6-4
Table 6-3	Construction Fuel Consumption.....	6-8
Table 6-4	Operations Fuel Consumption.....	6-9
Table 7-1	Comparison of Proposed Project and Reasonably Foreseeable Development – General Plan Alternative.....	7-5
Table 7-2	Comparison of Proposed Project and Reduced Residential and Civic Center Alternative.....	7-9
Table 7-3	Comparison of Project Alternative and Reduced Residential Alternative.....	7-13
Table 7-4	Comparison of Alternatives.....	7-17
Table 8.6-1	Flow Discharge into Serrano Creek.....	8-45
Table 8.6-2	Two Year Storm Event Conditions.....	8-46
Table 8.9-1	Noise/Land Use Compatibility Matrix.....	8-59
Table 8.9-2	Interior and Exterior Noise Standards.....	8-60
Table 8.9-3	Typical Construction Equipment Noise Levels.....	8-62
Table 8.9-4	Traffic Noise Levels Along Roadways – Proposed Project.....	8-64
Table 8.9-5	Typical Vibration Levels For Construction Equipment.....	8-70
Table 8.11-1	Student Generation – Proposed Project.....	8-76
Table 8.11-2	Student Generation – Project Alternative.....	8-76



LIST OF TABLES (continued)

Table 8.13-1	Existing Intersection LOS.....	8-80
Table 8.13-2	Trip Generation Rates.....	8-82
Table 8.13-3	Trip Generation – Proposed Project.....	8-82
Table 8.13-4	Trip Generation – Project Alternative.....	8-83
Table 8.13-5	Existing Plus Project Intersection LOS.....	8-85
Table 8.13-6	Year 2015 Intersection LOS Summary.....	8-86
Table 8.13-7	Year 2030 Intersection LOS.....	8-87
Table 8.13-8	On-Site Roundabout and Intersection LOS Summary.....	8-91
Table 8.13-9	2015 Peak Hour Signal Warrant.....	8-92
Table 8.13-10	2030 Peak Hour Signal Warrant.....	8-93
Table 8.13-11	Left-Turn Storage Length Requirements.....	8-94
Table 8.13-12	Cumulative Left-Turn Storage Length Requirements.....	8-95



This page intentionally left blank.



DRAFT EIR AND APPENDICES ON CD

This CD contains the Serrano Summit Area Plan 2009-01 and Tentative Tract Map No. 17331 Draft Environmental Impact Report (Draft EIR) and Appendices. The Opportunities Study Program EIR and associated Technical Appendices can be found on the City of Lake Forest web site at:

http://www.lakeforestca.gov/depts/ds/planning/op_study/peir.asp



This page intentionally left blank.