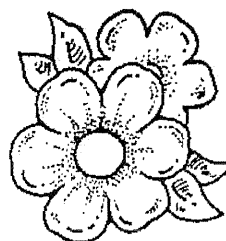


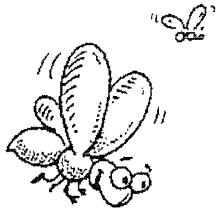
Contents



Foreword	1
Introduction	2
Pests, Pest Control, and Pesticides	3
Pest Management	3
First Steps in Pest Management	4
Preventing Pests	6
Indoor Prevention	6
Outdoor Prevention	7
◆ Gardening	7
◆ Lawn Care	8
Using Non-Chemical Pest Controls	11
Biological Controls	11
Manual Methods	12
Using Chemical Pest Controls	13
Choosing the Right Pesticide Product	14
Reading the Pesticide Label	16
Determining the Correct Amount To Use	18
Using Pesticides Safely and Correctly	19
◆ Before Using a Pesticide	19
◆ When Mixing or Applying a Pesticide	19
Indoor Applications	20
Outdoor Applications	21
◆ After Applying a Pesticide	22
Storing and Disposing of Pesticides Properly	23
◆ Safe Storage of Pesticides	23
◆ Safe Disposal of Pesticides	24



Reducing Your Exposure When Others Use Pesticides	26
Exposure Through Food	26
◆ Commercial Food	26
◆ Home-Grown Food	27
◆ Food from the Wild	27
Exposure Through Water	28
Exposure Through Air	28
◆ Outdoors	28
◆ Indoors	29
 Poisoned by Pesticides: Don't Let This Happen to Your Child!	 30
 Handling a Pesticide Emergency	 32
First Aid for Pesticide Poisoning	33
What To Do After First Aid	34
How To Recognize Pesticide Poisoning	35
 Choosing a Pest Control Company	 36
 Reference Section	 39
Calculating the Correct Amount of Pesticide To Use for Your Target Area	39
For More Information	42
Addresses	44
◆ EPA Regional Offices	44
◆ State Pesticide Agencies	45
 Index	 49



Foreword

The Environmental Protection Agency (EPA) is charged with ensuring that pesticides do not pose unreasonable risks to the public and to the environment. EPA regulates the use of pesticides under the authority of two laws—the Federal Insecticide, Fungicide, and Rodenticide Act (FIFRA) and the Federal Food, Drug and Cosmetic Act (FFDCA). Most all pesticides may legally be sold in the United States if they have been “registered” by EPA and if they bear an EPA registration number. Federal pesticide registration, however, is only the first step in preventing pesticide risks. Just as important are the steps that consumers take to control pests and use pesticides safely. EPA hopes that this booklet will help you control pests safely.

Introduction



SOONER OR LATER, we're all pestered by pests. Whether it's ants in the kitchen or weeds in the vegetable garden, pests can be annoying and bothersome. At the same time, many of us are concerned that the pesticides we use to control pests can cause problems too. How can pests be controlled safely? When and how should pesticides be used?

This booklet is intended to help answer these questions. The questions have no single right answer, but *Citizen's Guide to Pest Control and Pesticide Safety* gives the information you need to make informed decisions. You should be able to control pests without risking your family's health and without harming the environment.

The major goals of this booklet are to help you understand—

- ◆ What steps to take to control pests in and around your home.
- ◆ What alternatives to chemical pesticides are available, including pest prevention and non-chemical pest controls.

Did you know that these common household products are pesticides?




- ✓ Cockroach sprays and baits.
- ✓ Insect sprays and wasp repellents for indoor use.
- ✓ Insect repellents for personal use.
- ✓ Termite control products.
- ✓ Rat and other rodent poisons.
- ✓ Flea and tick sprays, powders, and pet collars.
- ✓ Kitchen, laundry, and bath disinfectants and sanitizers, including bleach.
- ✓ Products to kill mold and mildew.
- ✓ Lawn and garden products such as weed killers.
- ✓ Swimming pool chemicals, including those that kill algae.
- ✓ Repellents that keep deer, raccoons, or rabbits away from your garden.

- ◆ How to choose pesticides and how to use, store, and dispose of them safely.
- ◆ How to reduce your exposure when others use pesticides.
- ◆ How to choose a pest control company.
- ◆ What to do if someone is poisoned by a pesticide.



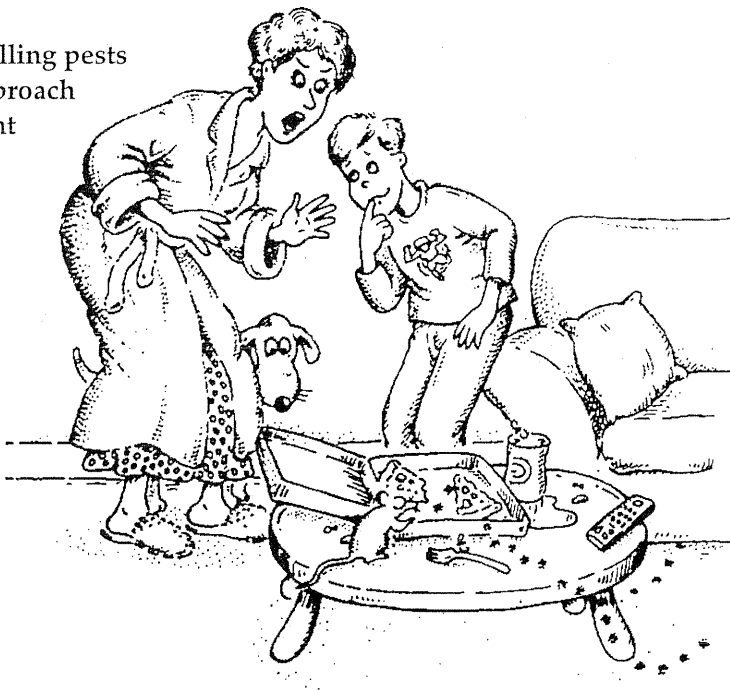
Pests, Pest Control, and Pesticides

 **PLANTS**, insects, mold, mildew, rodents, bacteria, and other organisms are a natural part of the environment. They can benefit people in many ways. But they can also be pests. Apartments and houses are often hosts to common pests such as cockroaches, fleas, termites, ants, mice, rats, mold, or mildew. Weeds, hornworms, aphids, and grubs can be a nuisance outdoors when they get into your lawn, flowers, yard, vegetable garden, or fruit and shade trees. Pests can also be a health hazard to you, your family, and your pets. It's easy to understand why you may need and want to control them.

Nowadays, you can choose from many different methods as you plan your strategy for controlling pests. **Sometimes a non-chemical method of control is as effective and convenient as a chemical alternative.** For many pests, total elimination is almost impossible, but it is possible to control them. **Knowing your options is the key to pest control.** Methods available to you include pest prevention, non-chemical pest controls, and chemical pesticides. Each of these methods will be described in more detail in the next three sections of this booklet (starting on pages 6, 11, and 13).

Pest Management

The most effective strategy for controlling pests may be to combine methods in an approach known as **integrated pest management (IPM) that emphasizes preventing pest damage.** In IPM, information about pests and available pest control methods is used to manage pest damage by the most economical means and with the least possible hazard to people, property, and the environment. An example of using the IPM approach for lawn care is presented in the next section of this booklet titled "Preventing Pests."



Some signs of pest infestation are unmistakable.

Knowing a range of pest control methods gives you the ability to choose among them for an effective treatment. Knowing the options also gives you the choice of limiting your exposure to potentially harmful chemicals. No matter what option you choose, you should follow these steps to control your pest problem:

First Steps in Pest Management

1 Identify the pest problem. This is the first and most important step in pest control—figuring out exactly what you’re up against. Some pests (or signs of them) are unmistakable—most people recognize a cockroach or a mouse. Other signs that make you think “pest” can be misleading. For example, what may look like a plant “disease” may be, in fact, a sign of poor soil or lack of water.

Use **free sources** to help identify your pest and to learn the most effective methods to control it. These sources include library reference books (such as insect field guides or gardening books) and pest specialists at your County Cooperative Extension Service or local plant nurseries. These resources are usually listed in the telephone book.

2 Decide how much pest control is necessary. Pest control is not the same as pest elimination. Insisting on getting rid of all pests inside and outside your home will lead you to make more extensive, repeated, and possibly hazardous chemical treatments than are necessary. Be reasonable. Ask yourself these questions:

- ◆ Does your lawn really need to be totally weed free?
- ◆ Recognizing that some insects are beneficial to your lawn, do you need to get rid of all of them?
- ◆ Do you need every type of fruit, vegetable, or flower you grow, or could you replace ones that are sensitive to pests with hardier substitutes?
- ◆ Can you tolerate some blemished fruits and vegetables from your garden?
- ◆ Is anyone in your home known to be particularly sensitive to chemicals?

3 Choose an effective option. Use the information gathered in Step 1, your answers to the questions in Step 2, and guidance in the sections titled “Preventing Pests,” “Using Non-Chemical Pest Controls,” and “Using Chemical Pest Controls” to determine which option you want to choose. If you’re still uncertain, get further advice from the free sources listed in Step 1.

4 Evaluate the results. Once a pest control method has been chosen and implemented, always allow time for it to work and then evaluate its effectiveness by taking the following steps:


- ◆ Compare pre-treatment and post-treatment conditions. Is there evidence of a clear reduction in the number of pests?
- ◆ Weigh the benefits of short-term chemical pesticide control against the benefits of long-term control using a variety of other treatments, including non-chemical methods.

It’s easier to prevent pests than to control them. You may not need to worry about the four pest control steps just mentioned **IF** you make the effort to prevent pests in the first place.



The first step in pest control is to identify the pest.

Preventing Pests

 **PESTS SEEK PLACES TO LIVE** that satisfy basic needs for air, moisture, food, and shelter. The best way to control pests is to try to prevent them from entering your home or garden in the first place. You can do this by removing the elements that they need to survive. Take the following preventive actions:

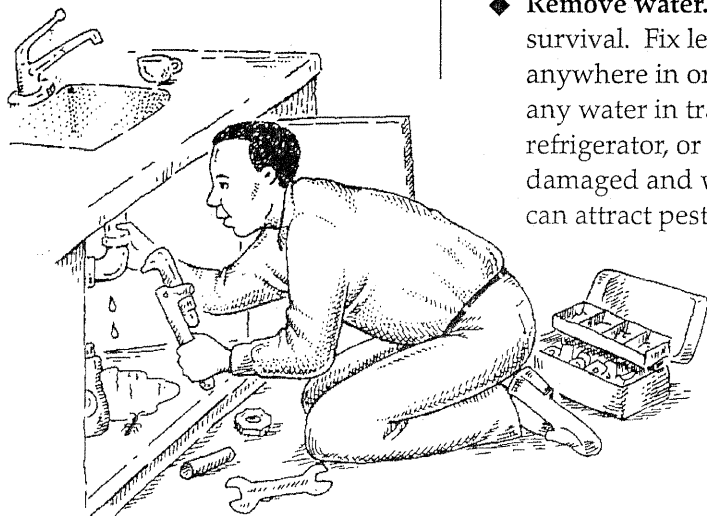
Indoor Prevention

◆ **Remove water.** All living things, including pests, need water for survival. Fix leaky plumbing, and do not let water accumulate anywhere in or around your home. For example, do not leave any water in trays under your houseplants, under your refrigerator, or in buckets overnight. Remove or dry out water-damaged and wet materials. Even dampness or high humidity can attract pests.

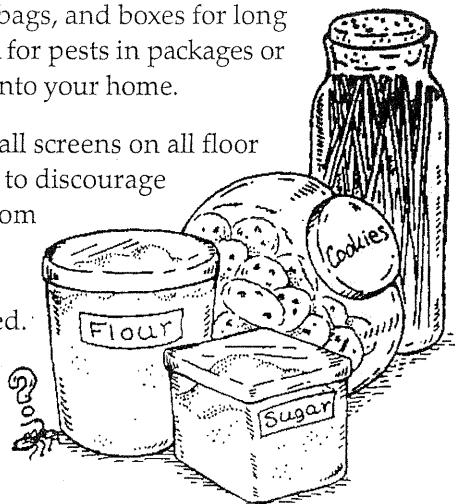
◆ **Remove food.** Store your food in sealed glass or plastic containers, and keep your kitchen clean and free from cooking grease and oil. Do not leave food in pet bowls on the counter or floor for long periods of time. Put food scraps or refuse in tightly covered, animal-proof garbage cans, and empty your garbage frequently.

◆ **Remove or block off indoor pest hiding places.** Caulk cracks and crevices to control pest access. Bathe pets regularly and wash any mats or surfaces they lie on to control fleas. Avoid storing newspapers, paper bags, and boxes for long periods of time. Also, check for pests in packages or boxes before carrying them into your home.

◆ **Block pest entryways.** Install screens on all floor drains, windows, and doors to discourage crawling and flying pests from entering your home. Make sure any passageways through the floor are blocked. Place weatherstripping on doors and windows. Caulk and seal openings in walls. Keep doors shut when not in use.



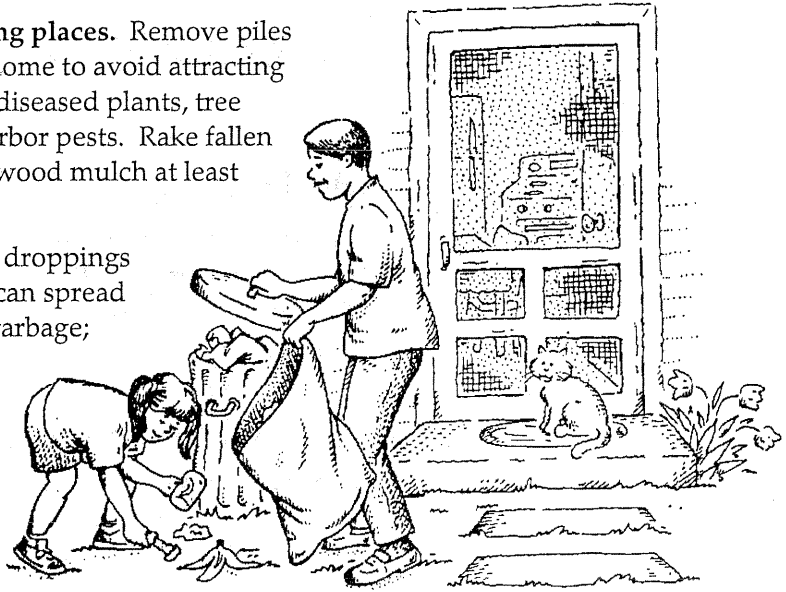
Pests need water to survive. Fix leaky pipes.



Store food in sealed containers.

Outdoor Prevention

- ◆ **Remove or destroy outdoor pest hiding places.** Remove piles of wood from under or around your home to avoid attracting termites and carpenter ants. Destroy diseased plants, tree prunings, and fallen fruit that may harbor pests. Rake fallen leaves. Keep vegetation, shrubs, and wood mulch at least 18 inches away from your house.
- ◆ **Remove breeding sites.** Clean up pet droppings from your yard; they attract flies that can spread bacteria. Do not accumulate litter or garbage; it draws mice, rats, and other rodents. Drain off or sweep away standing puddles of water; water is a breeding place for mosquitos and other pests. Make sure drain pipes and other water sources drain away from your house.
- ◆ **Take proper care of all outdoor plants.** These include flowers, fruit and shade trees, vegetable and other plants, and your lawn. Good plant health care reduces pest control needs—healthy plants resist pests better than do weak plants. Plant at the best time of year to promote healthy growth. Use mulch to reduce weeds and maintain even soil temperature and moisture. Water adequately. Native flowers, shrubs, and trees often are good choices because they adapt well to local conditions and require minimal care.



Remove breeding sites.
Clean up litter or garbage.

Gardening

- ◆ Select healthy seeds and seedlings that are known to resist diseases and are suited to the climate where you live. Strong seeds are likely to produce mature plants with little need for pesticides.
- ◆ If your garden is large, alternate rows of different kinds of plants. Pests that prefer one type of vegetable (carrots, for example) may not spread to every one of your carrot plants if other vegetables (not on the pests' diet) are planted in the neighboring rows.
- ◆ Don't plant the same crop in the same spot year after year. That way your plants are not as vulnerable to pests that survive the winter.
- ◆ Make sure your garden plot has good drainage. Raised beds will improve drainage, especially of clay soils. If a heavy clay soil becomes compacted, it does not allow air and water to get to the roots easily, and plants struggle to grow. To loosen



Before planting, add organic matter to enrich the soil mixture in your garden plot.

compacted soil and create air spaces so that water and nutrients can reach the roots, buy or rent a tiller that breaks up the dirt and turns it over. Before planting, add sand and organic matter to enrich the soil mixture in your garden plot. Also, have the soil tested periodically to see whether you need to add more organic matter or adjust the pH (acidity/alkalinity) balance by adding lime or sulfur. Your County Cooperative Extension Service, listed in the telephone book, or local nursery should be able to tell you how to do this.

- ◆ Mulch your garden with leaves, hay, grass clippings, shredded/chipped bark, or seaweed. **Do not use newspapers** to keep down weeds or to fertilize plants. **Newsprint may contain toxic metals** such as lead and mercury.

Lawn Care

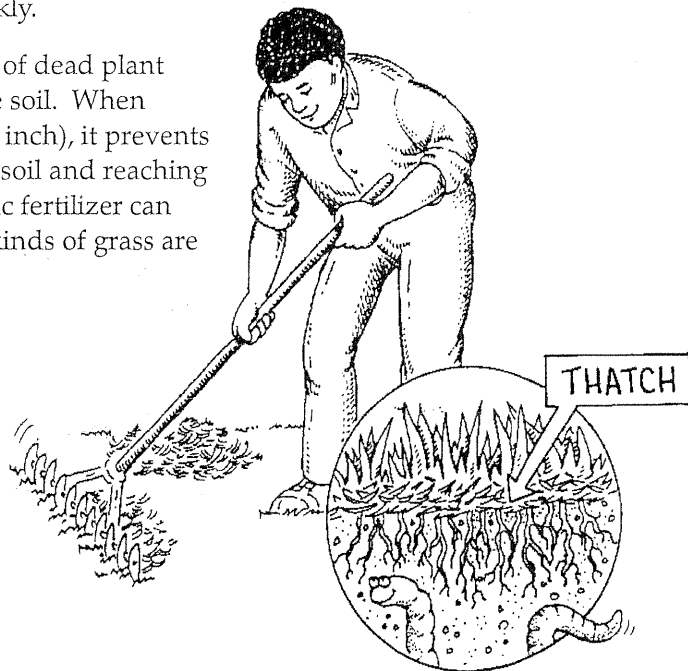
Tending a garden may not be your hobby; but if you rent or own a home, you might need to care for the lawn. You don't have to be an expert to grow a healthy lawn—the key is to work with nature. You need to create the right conditions for your grass to grow strong and stay healthy. A healthy lawn can resist damage from weeds, disease, and insect pests. **Set realistic weed and pest control goals** for your lawn.

Think of lawn care as a preventive health care program, like one you would follow to stay healthy yourself. The goal is to prevent problems from ever occurring.

Pesticides can be effective, but should not be relied on as the quick-fix solution to any lawn problem. Serious, ongoing pest problems are often a sign that your lawn is not getting what it needs to stay healthy. Pests may be a symptom of an underlying problem. You need to correct the underlying problem to reduce the chances of pests reappearing.

Make these six steps part of a preventive health care program for your lawn:

- 1 Develop healthy soil that has the right pH balance, key nutrients, and good texture.** You can buy easy-to-use soil analysis kits at hardware stores or contact your local County Cooperative Extension Service for a soil analysis.
- 2 Choose a type of grass that grows well in your climate.** For instance, if your area gets very little rain, don't plant a type of grass that needs a lot of water. Your local County Cooperative Extension Service can advise you on which grasses grow best in your area.
- 3 Mow high, mow often, and make sure the lawn mower blades are sharp.** Grass that is slightly long makes a strong, healthy lawn with few pest problems. Weeds have a hard time taking root and growing when grass is fairly long (around 2½ to 3½ inches for most types of grass). A foot-high meadow isn't necessary; just adding an inch to the length of your grass will give most lawns a real boost.
- 4 Water deeply but not too often.** The best rule is to water only when the lawn begins to wilt from dryness—when the color dulls and footprints stay in the grass for more than a few seconds. Avoid watering during the hottest part of the day because the water will evaporate too quickly.
- 5 Correct thatch buildup.** Thatch is a layer of dead plant material between the grass blades and the soil. When thatch gets too thick (deeper than ¾ of an inch), it prevents water and nutrients from getting into the soil and reaching the roots of the grass. Overusing synthetic fertilizer can create a heavy layer of thatch, and some kinds of grass are prone to thatch buildup.



Get rid of excess thatch by raking the lawn or using a dethatching rake.

In a healthy lawn, earthworms, spiders, millipedes, and a variety of microorganisms help keep the thatch layer in balance by breaking it up and using it for food, which releases nutrients into the soil. You can get rid of excess thatch by raking the lawn using a dethatching rake or by using a machine that pulls plugs out of the grass and thatch layer to break it up. Sprinkle a thin layer of topsoil or compost over the lawn after dethatching or aerating it to speed up the process of decomposition.

6 Set realistic weed and pest control goals. It is almost impossible to get rid of all weeds and pests. However, even a lawn that is 15 percent weeds can look almost weed-free to the casual observer. A healthy lawn will probably always have some weeds and some insect pests. But a healthy lawn will also have beneficial insects and other organisms like earthworms that keep pests under control. Improper use of pesticides can kill these beneficial organisms.


By following this preventive health care program for your lawn, you should be able to rely **very little, if at all**, on chemical pesticides for weed and insect pest control. For additional information, refer to EPA's booklet *Healthy Lawn, Healthy Environment*. (See page 42 in the Reference Section.)



If you use the preventive techniques just described, you reduce the chance of pests ever getting into your home or garden in the first place.



Using Non-Chemical Pest Controls

 **YOU'VE GOT PESTS**, and you want to control them with a dependable pest control method that does not contain chemical pesticides. Non-chemical pest control methods really work, and they have many advantages. Compared to chemical treatments, non-chemical methods are generally effective for longer periods of time. They are less likely to create hardy pest populations that develop the ability to resist pesticides. And many non-chemical pest controls can be used with fewer safeguards, because they are generally thought to pose virtually no hazards to human health or the environment. Two examples of non-chemical pest control methods are biological and manual treatments.

Biological Controls

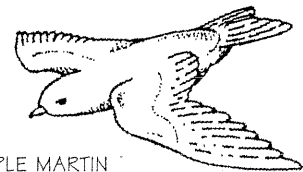
Did you know that pests themselves may be eaten or otherwise controlled by birds, insects, or other living organisms? You can use a pest's natural enemies (predators) to your advantage. These "biological controls," as they are called, take many forms:

- ◆ **Beneficial predators** such as purple martins and other birds eat insects; bats can eat thousands of insects in one night; lady beetles (ladybugs) and their larvae eat aphids, mealybugs, whiteflies, and mites. Other beneficial bugs include spiders, centipedes, ground beetles, lacewings, dragonflies, big-eyed bugs, and ants. You can install a purple martin house in your yard. You can also buy and release predatory insects. They are available from sources such as gardening catalogs and magazines.

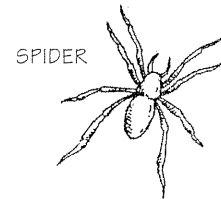
Contact your County Cooperative Extension Service, a nursery, or a garden association for information on how to attract and protect beneficial predators.

- ◆ **Parasitoids** such as miniature wasps lay their eggs inside the eggs or bodies of insect pests such as tomato hornworms. Once the eggs hatch, the offspring kill their insect hosts, making parasitoids highly effective pest controllers.

Beneficial Predators



PURPLE MARTIN



SPIDER



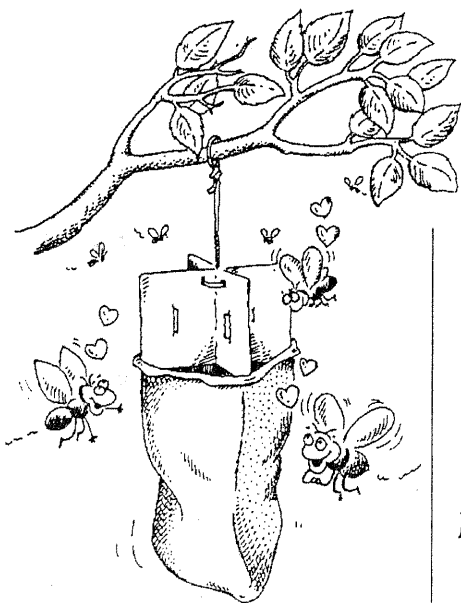
LADYBUG



CENTIPEDE

MINI-WASP





Pheromone traps lure pests.


- ◆ **Microscopic pathogens** such as fungi, bacteria, and viruses control pests. An example is milky spore disease, which attacks Japanese beetles. A number of these biological pesticides are available commercially at hardware and garden stores. (See page 43 in the Reference Section for more information.)
- ◆ **Biochemical pesticides** include pheromones and juvenile insect hormones. Pheromones are chemical substances released by various organisms (including insects) as means of communicating with others of the same species, usually as an aid to mating. Pheromones lure pests inside a trap. Juvenile insect hormones interfere with an insect's normal growth and reproductive functions by mimicking the effects of compounds that occur naturally in the pest.

Manual Methods

- ◆ Spading and hoeing to cut up weeds.
- ◆ Hand-picking weeds from your lawn and pests from your plants, indoors or out.
- ◆ Using a flyswatter.
- ◆ Setting traps to control rats, mice, and some insects.
- ◆ Mulching to reduce weed growth.

One or a combination of several non-chemical treatments may be just what you need for your pest problem. You must be patient because results may not be immediate. And, you must work to prevent pests from entering your home or garden in the first place.

Using Chemical Pest Controls

 **IF YOU DECIDE** that the best solution to your pest problem is chemical—by itself or, preferably, combined with non-chemical treatments—be aware that one of the greatest causes of pesticide exposure to humans is the use of pesticides in and around the home.

Anyone can buy a wide variety of “off the shelf” pesticide products to control weeds, unwanted insects, and other pests. No special training is required to use these pesticides. Yet many of the products can be hazardous to people, especially when stored, handled, applied, or disposed of improperly. **The results achieved by using chemical pesticides are generally temporary, and repeated treatments may be required.** Over time, some pests become pesticide-resistant, meaning they adapt to the chemical and are no longer harmed by it. This forces you to choose another product or method. If used incorrectly, home-use pesticide products can be poisonous to humans. As a result, it is extremely important for you to take responsibility for making sure that these products are used properly. The basic steps in reducing pesticide risks are—

- ◆ Choosing the right pesticide product.
- ◆ Reading the product label.
- ◆ Determining the right amount to purchase and use.
- ◆ Using the product safely and correctly.
- ◆ Storing and disposing of pesticides properly.

Each of these steps is described in more detail in the sections that follow.



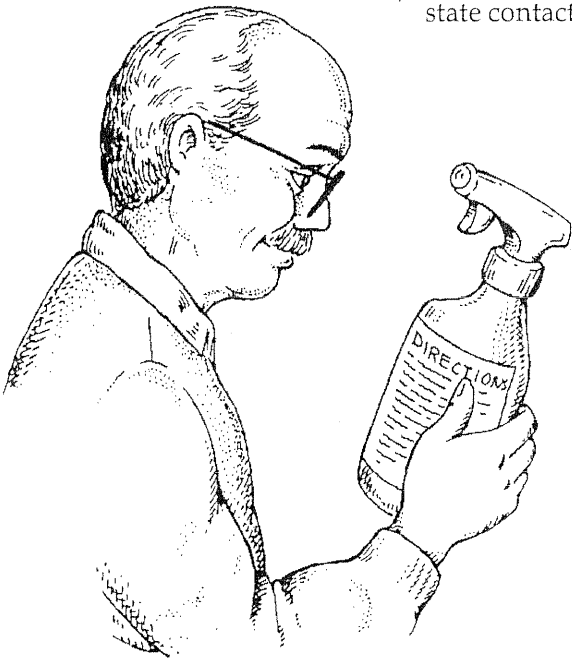
Choosing the right product is a basic step in reducing pesticide risks.

Choosing the Right Pesticide Product

Once you decide to use chemical pesticides, you must decide whether to do the job yourself or hire a professional pest control service. If you are interested in hiring professionals, see pages 36–38 for advice. If you choose to tackle the job yourself, the next question is the most important. Which pesticide product is the best one for your situation?

Home-use pesticides come in many forms—including solutions, aerosols, dusts, granules, baits, and wettable powders. As the name implies, wettable powders are usually mixed with water and/or other liquids and then applied. Pesticide solutions are often diluted with water. Certain formulations work better for some pests and/or some target areas than others. Many pesticides also come in ready-to-use forms, such as aerosols and spray bottles, which are often more practical and easy to use because they don't require measuring or mixing.

Before you buy a product, read the label! Compare product labels, and learn as much as you can about the pesticide. Contact your County Cooperative Extension Service (listed in the telephone book), local pesticide dealers, the National Pesticide Telecommunications Network (NPTN) at 1-800-858-7378, or your state pesticide agency for assistance. (See pages 45–48 in the Reference Section for state contacts.)



Read the label before you buy or use a pesticide product.

When you are ready to buy a pesticide product, follow these recommendations:

- ◆ First, be certain that you have identified the problem correctly. Then, choose the least toxic pesticide that will achieve the results you want **and** be the least toxic to you and the environment.
- ◆ When the words “broad-spectrum” appear on the label, this means the product is effective against a broad range of pests. If the label says “selective,” the product is effective against one or a few pests.
- ◆ Find the signal word—either *Danger-Poison*, *Danger*, *Warning*, or *Caution* on the pesticide label. The signal word tells you how poisonous the product is to humans. (See page 16.)

Pesticide products labeled *Danger-Poison* are “Restricted Use” and are mainly used under the supervision of a certified applicator. For the most part, these products **should not** be available for sale to the consumer.

- ◆ Choose the form of pesticide (aerosol, dust, bait, or other) best suited to your target site and the pest you want to control.



Choose the form of pesticide best suited to your target site and the pest you want to control.



DANGER-POISON means highly poisonous.

DANGER means poisonous or corrosive.

WARNING means moderately hazardous.

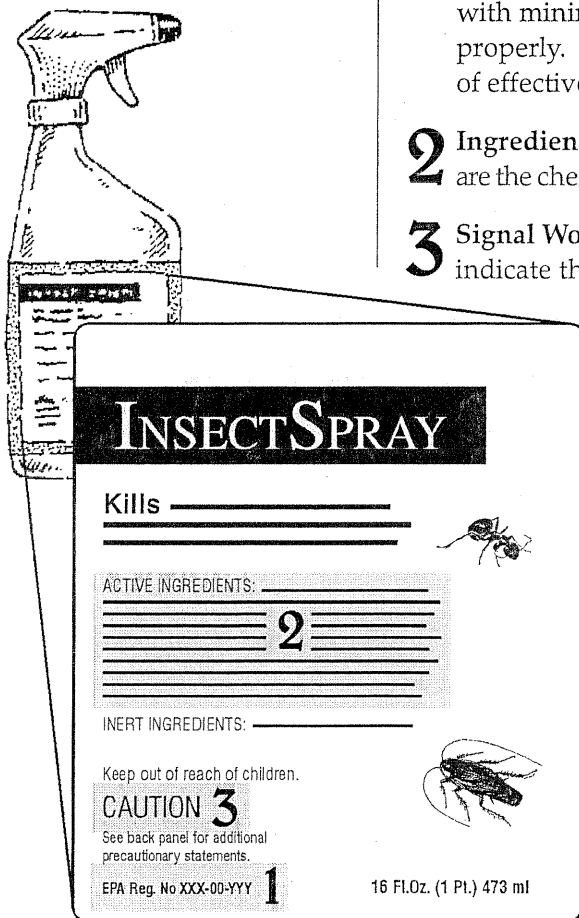
CAUTION means least hazardous.

Reading the Pesticide Label

The pesticide label is your best guide to using pesticides safely and effectively. The directions on the label are there primarily to help you achieve “maximum” benefits—the pest control that you desire—with “minimum” risk. Both depend on following label directions and correctly using the pesticide. *Read the label.* Read the label *before buying* the pesticide. Read the label *before mixing or using* the pesticide *each time*, and read the label before storing or disposing of the pesticide. Do not trust your memory. You may have forgotten part of the label instructions or they may have changed. Use of any pesticide in any way that is not consistent with label directions and precautions is illegal. It may also be ineffective and, even worse, dangerous.

The main sections of a pesticide label are described below:

- 1 EPA Registration Number.** This number tells you that EPA has reviewed the product and determined that it can be used with minimal or low risk if you follow the directions on the label properly. The number is not a stamp of approval or guarantee of effectiveness.
- 2 Ingredients Statement or Active Ingredients.** Active ingredients are the chemicals in the pesticide that kill or control the target pest(s).
- 3 Signal Words.** The signal words—*Caution, Warning, or Danger*—indicate the pesticide’s potential for making you sick. The word *CAUTION* appears on pesticides that are the least harmful to you. A pesticide with the word *WARNING* is more poisonous than those with a *Caution* label. Pesticides with the word *DANGER* on the label are very poisonous or irritating. They should be used with extreme care because they can severely burn your skin and eyes.



Main sections on front label.

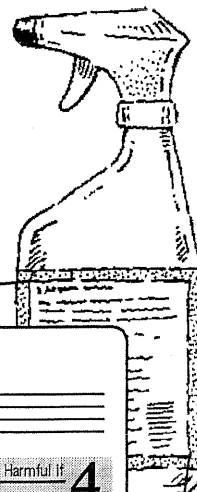
4 Precautionary Statements. This part describes the protective clothing, such as gloves or goggles, that you should wear when using the pesticide. The section also tells you how to protect children or pets by keeping them away from areas treated with pesticides.

5 Environmental Hazards. This section tells you if the product can cause environmental damage—if it's harmful to wildlife, fish, endangered plants or animals, wetlands, or water.

6 Directions for Use. Make sure that the product is labeled for use against the pest(s) that you are trying to control. (For example, products labeled only for termites should not be used to control fleas.) Use only the amounts recommended, and follow the directions exactly.

7 First Aid Instructions. The label tells you what to do if someone is accidentally poisoned by the pesticide. Look for this information in the *Statement of Practical Treatment* section. The instructions are only first aid. **ALWAYS** call a doctor or your local poison control center. You may have to take the person to a hospital right away after giving first aid. Remember to take the pesticide label or container with you.

8 Storage and Disposal. Read carefully and follow all directions for safe storage and disposal of pesticide products. Always keep products in the original container and out of reach of children, in a locked cabinet or locked garden shed.



INSECTSPRAY
InsectSpray contains _____

PRECAUTIONARY STATEMENTS
HAZARDS TO HUMANS AND DOMESTIC ANIMALS—CAUTION: Harmful if **4**

STATEMENT OF PRACTICAL TREATMENT (First Aid): **7**

ENVIRONMENTAL HAZARDS: **5**

PHYSICAL OR CHEMICAL HAZARDS: Keep away from _____

DIRECTIONS FOR USE: It is a violation of Federal law to use this product in a manner inconsistent with its labeling. **6**

FOR USE ON: _____

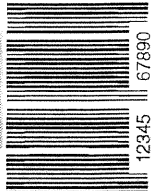
KILLS: _____

STORAGE AND DISPOSAL:

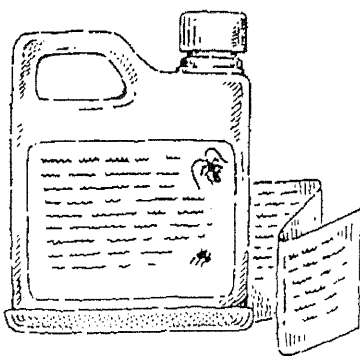
Storage: **8**

Disposal: _____

EPA Reg. No XXX-00-YYY
Distributed by INSECTSPRAY, INC.



Main sections on back label.



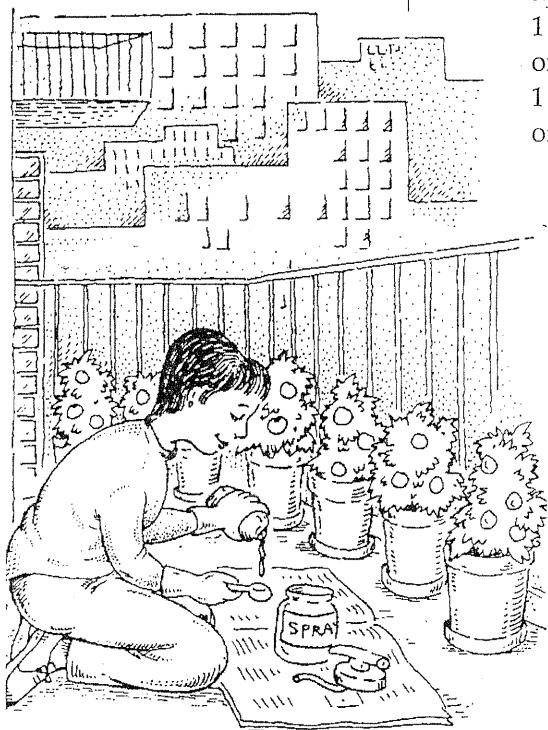
Some pesticides have small foldout booklets containing the label information.

Determining the Correct Amount To Use

Many products can be bought in a convenient ready-to-use form, such as in spray cans or spray bottles, that won't require any mixing. However, if you buy a product that has to be measured out or mixed with water, prepare only the amount of pesticide that you need for the area where you plan to use the pesticide (target area). The label on a pesticide product contains much useful information, but there isn't always room to include examples of different dilutions for every home use. Thus, it is important to know how to measure volume and figure out the exact size of the area where you want to apply the pesticide. Determining the correct amount for your immediate use requires some careful calculations. Use the following example as an illustration of how to prepare only the amount of pesticide needed for your immediate pest control problem.

An example: The product label says, "For the control of aphids on tomatoes, mix 8 fluid ounces of pesticide into 1 gallon of water and spray until foliage is wet." You have only 6 tomato plants. From experience, you know that 1 gallon is too much, and that you really need only 1 quart of water to wet the leaves on these 6 plants. A quart is only $\frac{1}{4}$ of a gallon. Because you want to use less water than the label says, you need less pesticide. You need only $\frac{1}{4}$ of the pesticide amount listed on the label—only 2 fluid ounces. This makes the same strength spray recommended by the label, and is the appropriate amount for the 6 tomato plants.

In short, all you need to do is figure the amount of pesticide you need for the size of your target area, using good measurements and careful arithmetic. For help in making these calculations, see pages 39–41 in the Reference Section.



When using pesticides that must be mixed, determine the correct amount for your immediate use.

Caution: When you use cups, teaspoons, or tablespoons to measure pesticides, use only **level** measures or level spoonfuls. **NEVER** use the same tools that you use for measuring pesticides—spoons, cups, bottles—to prepare food, even if you've washed them.

Using Pesticides Safely and Correctly

Once you have read the pesticide label and are familiar with all precautions, including first aid instructions, follow these recommendations to reduce your risks:

Before Using a Pesticide

- ◆ Wear the items of protective clothing the label requires: for example, long-sleeved shirts, long pants, overalls, non-absorbent gloves (not leather or fabric), rubber footwear (not canvas or leather), a hat, goggles, or a dust-mist filter. If no specific clothing is listed, gloves, long-sleeved shirts and long pants, and closed shoes are recommended. You can buy protective clothing and equipment at hardware stores or building supply stores.

When Mixing or Applying a Pesticide

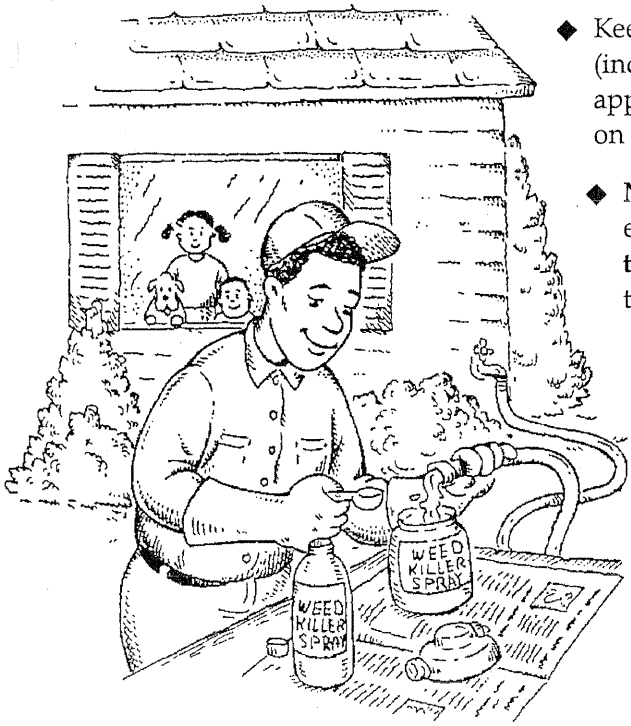
- ◆ Never smoke or eat while mixing or applying pesticides. You could easily carry traces of the pesticide from your hands to your mouth. Also, some pesticide products are flammable.
- ◆ Follow the use directions on the label carefully. Use only for the purpose listed. Use only the amount directed, at the time and under the conditions specified. **Don't change the recommended amount.** Don't think that twice the amount will do twice the job. It won't. You could harm yourself, others, or whatever you are trying to protect.
- ◆ If the directions on the label tell you to mix or dilute the pesticide, do so outdoors or in a well-ventilated area. Use the amount listed on the label and measure the pesticide carefully. (Never use the same measuring cups or spoons that you use in the kitchen.) Mix only the amount that you need for each application. Do not prepare larger amounts to store for possible future use. (See "Determining the Correct Amount To Use" on page 18.)



When using a pesticide—

- ✓ Read and follow the label directions.
- ✓ Wear protective clothing.
- ✓ Don't smoke or eat.
- ✓ Mix and apply only the amount you need.





Mix pesticides outdoors or in a well-ventilated area.

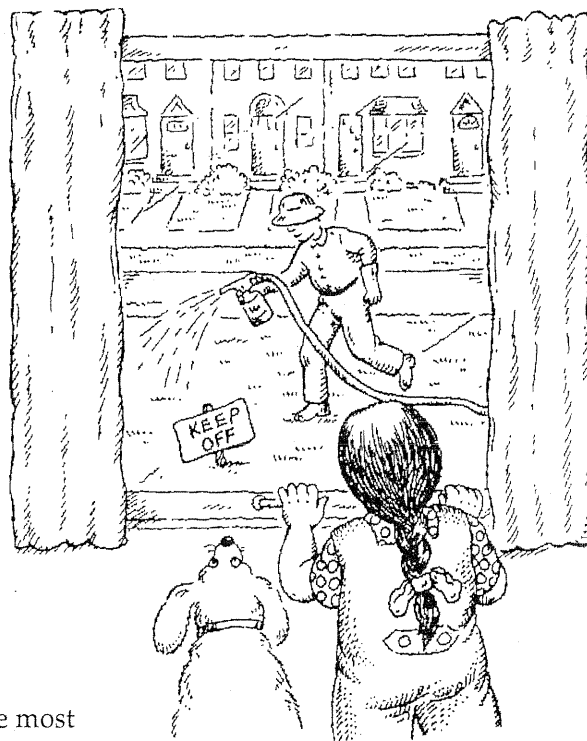
- ◆ Keep children, pets (including birds and fish), and toys (including pet toys) away from areas where you mix and apply pesticides for at least the length of time required on the label.
- ◆ **Never transfer pesticides to other containers**, such as empty soft drink or milk bottles. **Keep pesticides in their original containers**—ones that clearly identify the contents. Refasten all childproof caps tightly.
- ◆ If a spill occurs, clean it up promptly. Don't wash it away. Instead, sprinkle the spill with sawdust, vermiculite, or kitty litter. Sweep it into a plastic garbage bag, and dispose of it as directed on the pesticide product label.
- ◆ Indoors or outdoors, never put bait for insects or rats, mice, and other rodents where small children or pets can reach it. When using traps, make sure the animal inside is dead before you touch or open the trap.

Indoor Applications

- ◆ Use pesticides indoors only when absolutely necessary, and use only very limited amounts.
- ◆ Provide adequate ventilation. If the label directions permit, leave all windows open and fans operating after the application is completed. If the pesticide product is only effective in an unventilated (sealed) room or house, do not stay there. Put all pets outdoors, and take yourself and your family away from treated areas for **at least** the length of time prescribed on the label.
- ◆ Apply most surface sprays only to limited areas such as cracks; don't treat entire floors, walls, or ceilings.
- ◆ Remove food, pots and pans, and dishes before treating kitchen cabinets. Don't let pesticides get on any surfaces that are used for food preparation. Wait until shelves dry before refilling them. Wash any surfaces that may have pesticide residues before placing food on them.

Outdoor Applications

- ◆ Never apply pesticides outdoors on a windy day (winds higher than 10 mph). Position yourself so that a **light** breeze does not blow pesticide spray or dust into your face.
- ◆ Before spraying, close the doors and windows of your home.
- ◆ Use coarse droplet nozzles on your sprayer to reduce misting, and spray as close to the target as possible.
- ◆ Keep pesticides away from plants and wildlife you do not want to treat. Do not apply any pesticide to blooming plants, especially if you see honeybees or other pollinating insects around them. Do not spray bird nests when treating trees.
- ◆ Follow label directions carefully to ensure that you don't apply too much pesticide to your lawn, shrubs, or garden. Never water your lawn after applying pesticides. Before using a pesticide outdoors, check the label or contact your EPA Regional Office or County Cooperative Extension Service to find out whether the pesticide is known or suspected to run off or seep into ground water. Ground water is the underground reservoir that supplies water to wells, springs, creeks, and the like. Excessive application of pesticides could cause the pesticide to run off or seep into water supplies and contaminate them. Excess spray may also leave harmful residues on your home-grown fruit and vegetables, and could affect other plants, wildlife, and fish.
- ◆ Never mix or apply a pesticide near a wellhead.
- ◆ If you have a well, be sure it extends downward to water sources that are below, and isolated from, surface water sources. Be sure the well shaft is tightly sealed. For further information, see EPA's brochure *Pesticides in Drinking Water Wells*. (See page 42 for information on how to order a copy from EPA's Public Information Center.)
- ◆ When using total release foggers to control pests, the most important precautions you can take are to use no more than the amount needed and to keep foggers away from ignition sources (ovens, stoves, air conditioners, space heaters, and water heaters, for example). Foggers should not be used in small, enclosed places such as closets and cabinets or under tables and counters.

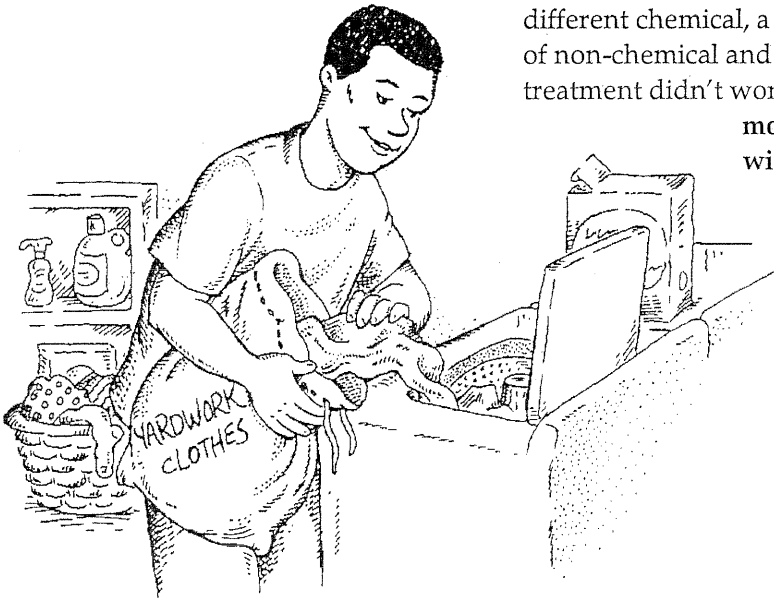


Keep children and pets away from areas where you apply pesticides.

After Applying a Pesticide, Indoors or Outdoors

- ◆ To remove pesticide residues, use a bucket to **rinse** tools or equipment **three times**, including any containers or utensils that you used when mixing the pesticide. Then pour the rinsewater into the pesticide sprayer and reuse the solution by applying it according to the pesticide product label directions. (See pages 24–25 for safe disposal guidelines.)
- ◆ Always wash your hands after applying any pesticide. Wash any other parts of your body that may have come in contact with the pesticide. To prevent tracking pesticides inside, remove or rinse your boots or shoes before entering your home. Wash any clothes that have been exposed to a lot of pesticide separately from your regular wash.
- ◆ Evaluate the results of your pesticide use. Consider using a different chemical, a non-chemical method, or a combination of non-chemical and chemical methods if the chemical treatment didn't work. Again, **do not assume** that using **more pesticide than the label recommends will do a better job.** It won't.

- ◆ Watch for negative effects on wildlife (birds, butterflies, and bees) in and near treated areas. If you see any unusual behavior, stop using that pesticide, and contact EPA's Pesticide Incident Response Officer (see page 35).



Wash clothing worn when using pesticides separately from other laundry.

Storing and Disposing of Pesticides Properly

Improper pesticide storage and disposal can be hazardous to human health and the environment. Follow these safety recommendations:

Safe Storage of Pesticides

- ◆ Don't stockpile. Reduce storage needs by buying only the amount of pesticide that you will need in the near future or during the current season when the pest is active.
- ◆ Follow all storage instructions on the pesticide label.
- ◆ Store pesticides high enough so that they are out of reach of children and pets. Keep all pesticides in a locked cabinet in a well-ventilated utility area or garden shed.
- ◆ Store flammable liquids outside your living area and far away from an ignition source such as a furnace, a car, an outdoor grill, or a power lawn mower.
- ◆ Never store pesticides in cabinets with or near food, animal feed, or medical supplies.
- ◆ Always store pesticides in their original containers, complete with labels that list ingredients, directions for use, and first aid steps in case of accidental poisoning.
- ◆ *Never* transfer pesticides to soft drink bottles or other containers. Children or others may mistake them for something to eat or drink.
- ◆ Use child-resistant packaging correctly—close the container tightly after using the product. Child resistant does not mean child proof, so you still must be extra careful to store properly—out of children's reach—those products that are sold in child-resistant packaging.
- ◆ Do not store pesticides in places where flooding is possible or in places where they might spill or leak into wells, drains, ground water, or surface water.
- ◆ If you can't identify the contents of the container, or if you can't tell how old the contents are, follow the advice on safe disposal in the next section.

Store pesticides in a locked cabinet out of reach of children and pets.



***Never* transfer pesticides to soft drink bottles or other containers that children or others may mistake for something to eat or drink.**



Safe Disposal of Pesticides

- ◆ The best way to dispose of small amounts of excess pesticides is to use them—apply them—according to the directions on the label. If you cannot use them, ask your neighbors whether they have a similar pest control problem and can use them.
- ◆ If all of the remaining pesticide cannot be properly used, check with your local solid waste management authority, environmental agency, or health department to find out whether your community has a household hazardous waste collection program or a similar program for getting rid of unwanted, leftover pesticides. These authorities can also inform you of any local requirements for pesticide waste disposal.
- ◆ **State and local laws regarding pesticide disposal may be stricter than the Federal requirements on the label.** Be sure to check with your state or local agencies before disposing of your pesticide containers.



Do not pour leftover pesticides down the sink, into the toilet, or down a sewer or street drain.

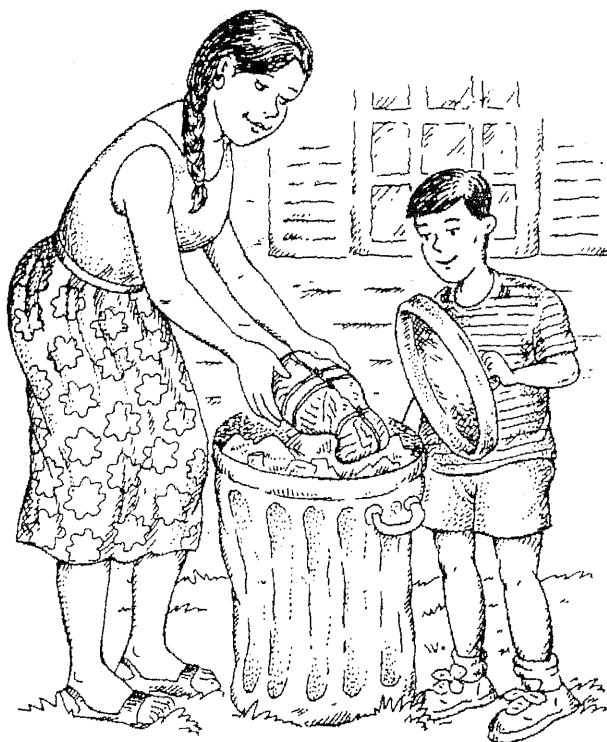
- ◆ If no community program or guidance exists, follow the label directions for disposal. In general, to dispose of less than a full container of a **liquid** pesticide, leave it in the original container with the cap tightly in place to prevent spills or leaks. Wrap the container in several layers of newspaper and tie it securely. Put the package in a covered trash can for routine collection with municipal trash. If you do not have a regular trash collection service, take the package to a permitted landfill (unless your town has other requirements).

Note: No more than 1 gallon of liquid pesticide at a time should be thrown out with the regular trash in this manner.

- ◆ Wrap individual packages of **dry** pesticides in several layers of newspaper (or place the pesticides in a tight carton or bag), and tape or tie the package closed. Put the package in a covered trash can for routine collection.

Note: No more than 5 pounds of dry pesticide at a time should be thrown out with the regular trash in this manner.

- ◆ Do **not** pour leftover pesticides down the sink, into the toilet, or down a sewer or street drain. Pesticides may interfere with the operation of wastewater treatment systems or pollute waterways. Many municipal systems are not equipped to remove all pesticide residues. If pesticides reach waterways, they may harm fish, plants, and other living things.
- ◆ An empty pesticide container can be as hazardous as a full one because of residues left inside. **Never reuse such a container.** When empty, a pesticide container should be rinsed carefully **three times** and the rinsewater thoroughly drained back into the sprayer or the container previously used to mix the pesticide. Use the rinsewater as a pesticide, following label directions. Replace the cap or closure securely. Dispose of the container according to label instructions. Do **not** puncture or burn a pressurized container like an aerosol—it could explode. Do not cut or puncture other empty pesticide containers made of metal or plastic to prevent someone from reusing them. Wrap the empty container and put it in the trash **after** you have rinsed it.
- ◆ Many communities have programs to recycle household waste such as empty bottles and cans. Do not recycle any pesticide containers, however, unless the label specifically states that the empty container may be recycled after cleaning.



Follow the label directions for disposal.

Reducing Your Exposure When Others Use Pesticides



EVEN IF YOU NEVER USE PESTICIDES YOURSELF, you can still be exposed to them—at home, school, work, or play—by being in treated areas, as a consumer of commodities that others have treated with pesticides, or through food, water, and air that may have been contaminated with pesticides.

This section describes sources of exposure other than your own use of pesticides. It also suggests ways to reduce your overall exposure. If you know or suspect that you, or others close to you, are sensitive to chemicals, consult an expert who can help you develop a strategy for handling your potential exposure problems.

Exposure Through Food

Commercial Food

To ensure a safe food supply, EPA regulates the safety of food by setting safety standards to limit the amount of pesticide residues that legally may remain in or on food or animal feed that is sold in the United States. Both domestic and imported foods are monitored by the Food and Drug Administration (FDA) and the U.S. Department of Agriculture (USDA) to ensure compliance with these safety standards.

Because most crops are treated with pesticides at least some of the time, foods you buy at the grocery store may contain small traces of pesticide residues. Pesticide levels tend to decline over time because the residues break down and because crops are usually washed and processed before reaching the marketplace. So, while we all consume small amounts of pesticides regularly, levels in our food generally are well below legal limits by the time the food reaches the grocery shelves.

Although EPA sets safety standards for the amount of pesticide residues allowed both in and on foods, you can take extra precautions to reduce the traces of pesticide residues you and your family consume in the food you buy. Follow these suggestions:

- ◆ Trim the fat from meat and poultry because residues of some pesticides concentrate in fat. Remove the skin from fish.
- ◆ Discard the fats and oils in broths and pan drippings.

- ◆ Rinse fruits and vegetables thoroughly with water. Scrub them with a brush and peel them, if possible. Taking these safety steps will remove most of the existing surface residues, along with any remaining dirt. Note that surface cleaning (rinsing and scrubbing) will not remove pesticide residues that are absorbed into the growing fruit or vegetable before harvest.
- ◆ Cook or bake foods to reduce residues of some pesticides even further.



Home-Grown Food

Growing your own food can be an enjoyable activity. It is also a way to reduce your exposure to pesticide residues in food—especially if you decide not to use chemical pesticides on your produce and you choose a garden site where drift or runoff from a neighbor's use of pesticides will not result in unintended residues on your food. If your house is regularly treated for pest prevention, don't plant your garden where the treatments are applied.

Food from the Wild

While it may seem that hunting your own game, catching your own fish, or gathering wild plant foods would reduce your overall exposure to pesticides, that isn't necessarily true. If you eat wild animals or plants from areas where pesticides are frequently used, this food may contain pesticide residues. In addition, birds such as ducks and geese may absorb pesticide residues if they have stopped to eat treated crops anywhere along their flight path.

If you eat food from the wild, you may want to take the following steps to reduce your exposure to pesticides:

- ◆ Do not fish in water bodies where contamination has occurred. Pay attention to posted signs that warn of contamination.
- ◆ Consult with fish and game officials or other appropriate officials where you plan to hunt or fish to determine whether there are any chemical problems associated with the area.
- ◆ Do not pick wild plants that are growing right next to a road, utility right-of-way, or hedgerow between farm fields. These areas may have been treated with pesticides.
- ◆ When preparing wild foods, trim fat from the meat. Discard the skin from fish.

Rinse fruits and vegetables with water. Scrub them with a brush and peel them, if possible.



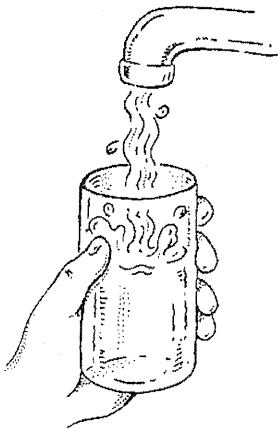
Do not fish in water bodies where contamination has occurred.

Exposure Through Water

When pesticides are applied to land, a certain amount may run off into streams and rivers. This runoff, together with industrial waste, may result in low-level contamination of surface water. In certain settings—for example, when sandy soil lies over a ground-water source that is near the surface—pesticides can seep down through the soil to the ground water.

To ensure a safe supply of drinking water, EPA's Office of Water sets standards for pesticides and other chemicals that may be found in drinking water. Municipal water systems test their water periodically and provide treatment or alternate supply sources if residue problems occur. Generally, private wells are not tested unless the well owner requests an analysis. If you get your drinking water from a private well—

- ◆ Contact your state or local health department if you have any questions about pesticide or other chemical residues in your well water.
- ◆ If your well water is analyzed and found to contain pesticide residue levels above established or recommended health standards, use an alternate water source such as bottled water for drinking and cooking. The safest choice is distilled spring water in glass bottles. If you buy water from a local bottler, ask for the results of any recent pesticide analysis of the bottled water.



EPA sets standards for chemicals that may be found in drinking water.

Exposure Through Air

Outdoors

Air currents may carry pesticides that were applied on properties nearby. You can reduce your exposure outdoors to airborne pesticide residues, or drift, by following these recommendations:

- ◆ If a close neighbor or someone else is applying pesticides outdoors near your home, you may want to stay indoors with your children and pets. Keep windows and exterior doors closed.
- ◆ If you live near fields, parks, or other areas that receive regular pesticide treatment, consider planting a group of hardy, thick-branched trees or shrubs to help serve as a buffer zone and windbreak.

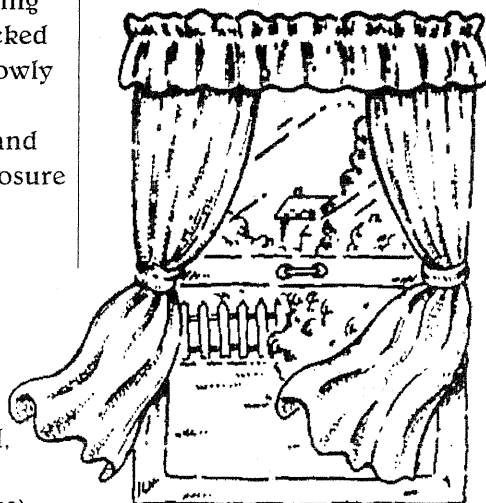
- ◆ Careless application can lead to drift or direct spraying of non-target sites. If your property is accidentally sprayed during an aerial pesticide application, you should call your local, state, or regional pesticide office. (See pages 44–48 in the Reference Section for phone numbers.) If you or someone in your family is accidentally sprayed, wash pesticide off immediately and change into clean clothes. Then call your local poison control center.

Some local governments require public notice before area-wide or broad-scale pesticide spraying activities take place. Affected residents are notified through newspaper announcements, fliers, letters, or signs posted in areas to be treated. Some communities have also enacted “right-to-know” ordinances that require public notice (usually through posting) of lawn treatments and other small-scale outdoor pesticide uses.

Indoors

The air you breathe may contain low levels of pesticide residues long after a pesticide has been applied to objects inside a building or to indoor surfaces and crawl spaces, or after it has been tracked in from outside. Pesticides break down and disappear more slowly indoors than outdoors. In addition, many homes have built-in energy efficiency features that reduce the exchange of indoor and outdoor air and thus aggravate the problem. To limit your exposure to indoor pesticide residues—

- ◆ Air out the building adequately after a pesticide is applied indoors. Open doors and windows, and run overhead, whole-house, or window fans to exchange indoor air for outdoor air rapidly and completely.
- ◆ If you suspect that the air in your building is contaminated, consult knowledgeable professionals in your local or state health department or EPA's pesticide hotline (1-800-858-7378), 6:30 a.m.– 4:30 p.m. Pacific time (9:30 a.m.–7:30 p.m. Eastern time) Monday–Friday, for advice on the appropriate steps to take.



Air out the building adequately after a pesticide is applied indoors.

Poisoned by Pesticides: Don't Let This Happen to Your Child!

A 5-year-old boy drinks from a bottle of bleach that he found under the bathroom sink.

A 3-year-old girl tries to spray her hair the way mommy does, but sprays an aerosol disinfectant in her eyes instead.

A baby who has just begun to crawl eats green pebbles from behind the sofa. They look like candy, but are really rat poison.

Where do you store your pesticides?

A 1992 nationwide study conducted by EPA revealed that almost half (approximately 47 percent) of surveyed households with children under the age of 5 had at least one pesticide stored within their reach.

These accidents could happen to your children or to children visiting your home if you don't store pesticides out of their reach or if you don't read the label carefully before using the pesticide product.

The dangers are real. In 1993 alone, an estimated 80,000 children were exposed to or poisoned by a household pesticide product that was used or stored incorrectly.

Whether or not you have young children in your home, take the following precautions to protect all children from unintentional pesticide poisonings or exposures:

- ◆ Always store pesticides out of children's reach, in locked cabinet or garden shed. Installing child-proof safety latches or padlocks on cupboards and cabinets is a good idea. Safety latches are available at your local hardware store or building supply warehouse.
- ◆ Before applying pesticides—indoors or outdoors—remove children and their toys, along with any pets and their toys, from the area. Keep them away from the area that has been treated until the pesticide has dried and for at least the length of time recommended on the pesticide label.
- ◆ If you are interrupted while applying a pesticide—by a phone call, for example—be sure to close the pesticide container properly and put it out of reach of any child who may come into the area while you are gone.

- ◆ Never remove labels from containers, and never transfer pesticides to other containers. Children may mistake them for food or drink.
- ◆ Never put rodent or insect baits where small children can find them, pick them up, and put them in their mouths.
- ◆ Make sure you close any container marked "child resistant" very tightly after you use the product. Check periodically to make sure the product is securely closed. Child resistant does not mean child proof, so you should still be careful with products that are sold in child-resistant packaging.
- ◆ Make sure others—especially babysitters, grandparents, and other caregivers—know about the potential hazards of pesticides.
- ◆ Teach children that "pesticides are poisons"—something they should never touch or eat.
- ◆ Keep the telephone number of your nearest poison control center near each phone. Have the pesticide container handy when you call.
- ◆ Always keep Syrup of Ipecac on hand (in your medicine cabinet) to use to induce vomiting. (Be sure the date is current.) But do not give it to your child until a physician or poison control center advises you to do so. The pesticide label may not recommend using Syrup of Ipecac.



Store pesticides out of children's reach.

Handling a Pesticide Emergency

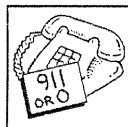
“Help! Someone’s Been Poisoned!” What To Do in a Pesticide Emergency



If the person is unconscious, having trouble breathing, or having convulsions . . .
ACT FAST! Speed is crucial.



Give needed first aid immediately.



Call 911 or your local emergency service. If possible, have someone else call for emergency help while you give first aid.



If the person is awake or conscious, not having trouble breathing, and not having convulsions . . .



Read the label for first aid instructions.



Call a doctor, a poison control center, a local emergency service (911), or the National Pesticide Telecommunications Network (toll free at 1-800-858-7378).



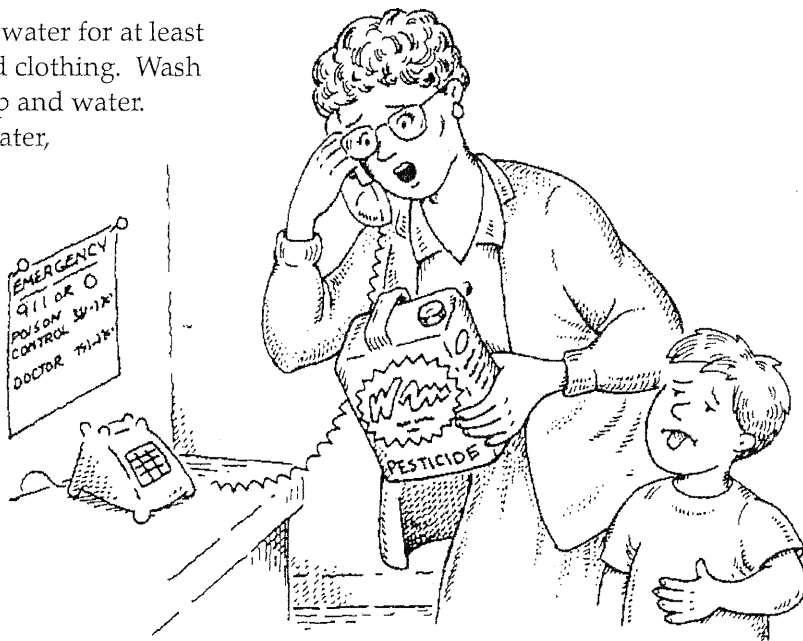
Give first aid.

First Aid for Pesticide Poisoning

When you realize a pesticide poisoning has occurred or is occurring, try to determine what the victim was exposed to and what part of the body was affected before you take action—taking **the right action** is as important as taking **immediate action**. If the person is unconscious, having trouble breathing, or having convulsions, **ACT FAST!** Speed is crucial. Give needed first aid immediately. Call 911 or your local emergency service. If possible, have someone else call for emergency help while you give first aid. If the person is awake or conscious, not having trouble breathing, and not having convulsions, read the label for first aid instructions. Call a doctor, a poison control center, a local emergency service (911), or the National Pesticide Telecommunications Network (toll free at 1-800-858-7378). Give first aid.

Read the *Statement of Practical Treatment* section on the product label. The appropriate first aid treatment depends on the kind of poisoning that has occurred. Follow these general guidelines:

- ◆ **Swallowed poison.** A conscious victim should drink a small amount of water to dilute the pesticide. Always keep Syrup of Ipecac on hand (in your medicine cabinet) to use to induce vomiting. Be sure the date on the bottle is current. Induce vomiting **only** if a poison control center or physician advises you to do so, or if instructions on the pesticide label say so. If there is no label available to guide you, do **not** induce vomiting. Never induce vomiting if the victim is unconscious or is having convulsions.
- ◆ **Poison on skin.** Drench skin with water for at least 15 minutes. Remove contaminated clothing. Wash skin and hair thoroughly with soap and water. Dry victim and wrap in blanket. Later, discard contaminated clothing or thoroughly wash it separately from other laundry.
- ◆ **Chemical burn on skin.** Drench skin with water for at least 15 minutes. Remove contaminated clothing. Cover burned area immediately with loose, clean, soft cloth. Do not apply ointments, greases, powders, or other drugs. Later, discard contaminated clothing or thoroughly wash it separately from other laundry.



If a poisoning has occurred, call for help, and be ready to read information from the pesticide label.

- ◆ **Poison in eye.** Hold eyelid open and wash eye quickly and gently with clean cool running water from the tap or a hose for 15 minutes or more. Use only water; do not use eye drops, chemicals, or drugs in the eye. Eye membranes absorb pesticides faster than any other external part of the body, and eye damage can occur in a few minutes with some types of pesticides.
- ◆ **Inhaled poison.** If the victim is outside, move or carry the victim away from the area where pesticides were recently applied. If the victim is inside, carry or move the victim to fresh air immediately. If you think you need protection like a respirator before helping the victim, call the Fire Department and wait for emergency equipment before entering the area. Loosen the victim's tight clothing. If the victim's skin is blue or the victim has stopped breathing, give artificial respiration (if you know how) and call 911 for help. Open doors and windows so no one else will be poisoned by fumes.

What To Do After First Aid

- ◆ First aid may precede but should not replace professional medical treatment. After giving first aid, call 911 or your local emergency service immediately. Have the pesticide label at hand when you call.
- ◆ Take the pesticide product container **with its label** to the doctor's office or emergency room where the victim will be treated. Carry the container in your trunk or flatbed away from the passengers in your vehicle. The doctor needs to know what active ingredient is in the pesticide before prescribing treatment. This information is on the label, which sometimes also includes a telephone number to call for additional treatment information.

Another good resource in a pesticide emergency is NPTN, the National Pesticide Telecommunications Network, a toll-free telephone service that operates Monday through Friday, from 6:30 a.m.– 4:30 p.m. Pacific time (9:30 a.m.– 7:30 p.m. Eastern time). NPTN provides information on pesticides and how to recognize and respond to pesticide poisonings. If necessary, staff at NPTN can transfer your call directly to a local poison control center. Call NPTN toll free at 1-800-858-7378.

**National Pesticide
Telecommunications Network
(NPTN)**

Call Toll Free 1-800-858-7378



NPTN staff answer questions about animal poisonings, too. To keep your pets from being poisoned, follow label directions on flea and tick products carefully. If you are concerned about the chemicals used in these products, consult your veterinarian.

How To Recognize Pesticide Poisoning

External irritants that contact skin may cause skin damage such as redness, itching, or pimples. External irritants may also cause an allergic skin reaction that produces redness, swelling, or blistering. The mucous membranes of the eyes, nose, mouth, and throat are also quite sensitive to chemicals. Pesticide exposure may cause stinging and swelling in these membranes.

Internal injuries also may occur if a pesticide is swallowed, inhaled, or absorbed through the skin. Symptoms vary from organ to organ. Lung injury may result in shortness of breath, drooling (heavy salivation), or rapid breathing. Direct injury to the stomach and intestines may produce nausea, vomiting, abdominal cramps, or diarrhea. Injury to the nervous system may cause excessive fatigue, sleepiness, headache, muscle twitching, and numbness. In general, different types of pesticides produce different sets of symptoms.

If someone develops symptoms after working with pesticides, seek medical help immediately to determine if the symptoms are pesticide related. In certain cases, blood or urine should be collected for analysis, or other specific exposure tests can be made. **It is better to be too cautious than too late.**

Avoid potential health problems by minimizing your exposure to pesticides. Follow all the safety recommendations on pages 19–25.

EPA wants to know about any adverse effects associated with pesticide exposure. If you have such information, contact—

Pesticide Incident Response Officer
Office of Pesticide Programs (7506C)
U.S. Environmental Protection Agency
401 M Street, SW
Washington, DC 20460

Choosing a Pest Control Company



IF YOU HAVE a pest control problem that you do not want to handle on your own, you may decide to turn to a professional applicator. How can you be sure that the pest control company you hire will do a good job? Before you choose a company, get answers to these questions:

1 Is the company licensed?

Most state or local agencies issue state pest control licenses. Make sure the pest control operator's licence is **current** if one is required in your state. Also, ask if the company's **employees are bonded**, meaning that the company reimburses you for any loss or damage caused by the employee.

You may want to contact your state pesticide agency to find out about its pesticide certification and training programs and to ask whether periodic recertification is required for pest control operators. (See pages 45–48 for addresses and phone numbers.)

In addition, possession of a city license—where they are issued—is one more assurance that the company you are dealing with is reputable and responsible.

2 Is the company willing and able to discuss the treatment proposed for your home?

Selecting a pest control service is just as important as selecting other professional services. Look for the same high degree of competence you would expect from a doctor or lawyer. Any company, including those advertising themselves as “green,” should inspect your premises and outline a recommended control program, including the—

- ◆ Pests to be controlled.
- ◆ Extent of the problem.
- ◆ Active ingredient(s) in the pesticide chosen.
- ◆ Potential adverse health effects and typical symptoms of poisoning associated with the active ingredient.
- ◆ Form of the pesticide and application techniques.
- ◆ Non-chemical alternatives available.

- ◆ Special instructions to reduce your exposure to the pesticide (such as vacating the house, emptying the cupboards, and removing pets).
- ◆ Steps to take to minimize your pest problems in the future.

3 Does the company have a good track record?

Don't rely on the company salesperson to answer this question. Research the answer yourself. Ask neighbors and friends if they have ever dealt with the company. Were they satisfied with the service they received? Call the Better Business Bureau or local consumer office and find out if they have received complaints about the company.

4 Does the company have appropriate insurance? Can the salesperson show proof on paper that the company is insured?

Most contractors carry general liability insurance, including insurance for sudden and accidental pollution. Their insurance gives you a certain degree of protection should an accident occur while pesticides are being applied in your home. Contractors may also carry workmen's compensation insurance, which can help protect you should one of their employees be injured while working in or around your apartment or house. Although most states do not require pest control companies to buy insurance, you should **think twice** before hiring a company that is not insured.

5 Does the company guarantee its work?

You should be skeptical about a company that does not guarantee its work. In addition, be sure to find out what you must do to keep your part of the bargain. For example, in the case of termite control treatments, the company's guarantee may become invalid if you make structural alterations to your home without giving prior notice to the pest control company.

6 Is the company affiliated with a professional pest control association?

Professional associations—national, state, or local—keep members informed of new developments in pest control methods, safety, training, research, and regulations. Members agree to honor a code of ethics. The fact that a company, small or large, chooses to join a professional association signals its concern for quality.



Ask questions before choosing a pesticide company.

You and the company of your choice should develop the contract together. Your safety concerns should be noted and reflected in the choice of pesticides to be used. These concerns may include allergies, sensitivities, age of occupants (infants or elderly), resident pets, and treatment near wildlife and fish. Wise consumers get bids from two or three companies and look at value more than price. What appears to be a bargain may warrant a second look.

If you hire a pest control firm to do the job, ask the company to use the least toxic chemical method available that will do the job. Ask to see the label or Material Safety Data Sheet, which will show precautionary warnings.

Hiring a company to take care of your pest problem does not mean your job is over. You must evaluate the results. If you believe something has gone wrong with the pesticide application, contact the company and/or your state pesticide agency. Be a responsible, wise consumer and keep asking questions until your pests are under control.

Reference Section


Calculating the Correct Amount of Pesticide To Use for Your Target Area

To determine the size of your target area outdoors (usually a square or rectangular part of your lawn or garden), measure each side and multiply the length times the width. For example, if you want to apply a pesticide in an area that is 15 feet long and 15 feet wide, multiply 15×15 to get a total of 225 square feet.

When you read the label for pesticides commonly applied outdoors, you will see measurements in square feet or in square yards. A section of lawn that is 1 yard long \times 1 yard wide has an area of 1 square yard. Because 1 yard = 3 feet, another way to calculate the same area is this: 3 feet long \times 3 feet wide = 9 square feet = 1 square yard.


To know the size of your target area indoors, you may need to determine the volume of a room. You must calculate the volume of a room, for instance, before using a bug bomb (aerosol release) to control cockroaches or fleas. In a case like this, measure and multiply the room's length times width times height. For example, if the kitchen in your apartment is 6 feet long, 5 feet wide, and 8 feet high, its volume is 240 cubic feet ($6 \times 5 = 30 \times 8 = 240$).

Tables 1 to 3 (on pages 40–41) give examples for changing measurements you find on the pesticide label to match your specific target area and pest problem.



For most pesticide uses in and around the home, you need to know some common ways to measure volume and some common abbreviations:

1 gallon (gal.)	= 16 cups
	= 8 pints (pt.)
	= 4 quarts (qt.)
	= 128 fluid ounces (fl. oz.)
1 quart (qt.)	= 4 cups
	= 2 pt.
	= 32 fl. oz.
1 pint (pt.)	= 2 cups
	= 16 fl. oz.
1 cup	= 8 fl. oz.
1 tablespoon	= 3 teaspoons
	= ½ fl. oz.
1 teaspoon	= ⅓ fl. oz.
1 sq. yard	= 9 square feet = 3 ft. long \times 3 ft. wide



Not all amounts are included in the tables. For amounts not included, use the following notes as a guide:

- ◆ To figure the amount of a ready-to-use pesticide (**not** to be diluted with water), you must change the quantity of pesticide in the same way that you change the area/volume/number of items treated to keep the correct proportion.

For example—

$$\begin{array}{l} \frac{1}{2} \text{ lb. of pesticide} \\ \text{per 1,000 sq.ft.} \end{array} = \begin{array}{l} \frac{1}{4} \text{ lb. of pesticide} \\ \text{per 500 sq.ft.} \end{array}$$

- ◆ To figure the amount of a pesticide that **is to be** diluted with water, you must change the quantity of pesticide and the quantity of water in the same way that you change the area/volume/number of items treated to keep the correct proportion.

For example—

$$\begin{array}{l} 1 \text{ lb. of pesticide} \\ \text{in 2 gals. of water} \\ \text{per 2,000 sq.ft.} \end{array} = \begin{array}{l} \frac{1}{2} \text{ lb. of pesticide} \\ \text{in 1 gal. of water} \\ \text{per 1,000 sq.ft.} \end{array}$$

TABLE 1 — Diluting Pesticides with Water

Unit stands for any measure of pesticide quantity. Read across.

Pesticide Label Says:

Mix "x" Units of

Pesticide . . .

You mix . . .

8 units per 1 gal water	2 units per 1 qt water or	1 unit per 1 pt water
16 units per 1 gal water	4 units per 1 qt water or	2 units per 1 pt water
32 units per 1 gal water	8 units per 1 qt water or	4 units per 1 pt water
128 units per 1 gal water	32 units per 1 qt water or	16 units per 1 pt water

TABLE 2 — Measuring Pesticides for a Surface Application

Unit stands for any measure of pesticide quantity. Read across.

Pesticide Label Says: Apply "x" Units of Pesticide . . .	Your surface measures . . .		
	20,000 sq.ft.	10,000 sq.ft.	500 sq.ft.
1 unit per 1,000 sq.ft. Apply:	20 units	10 units	½ unit
2 units per 1,000 sq.ft.	40 units	20 units	1 unit
5 units per 1,000 sq.ft.	100 units	50 units	2½ units
10 units per 1,000 sq.ft.	200 units	100 units	5 units

TABLE 3 — Buying Pesticides for a Room Application

Read across.

Pesticide Label Says: Release One Aerosol Can . . .	Your room measures . . .		
	20,000 cu.ft.	10,000 cu.ft.	5,000 cu.ft.
1 per 10,000 cu.ft. Use:	2 cans	1 can	don't use
1 per 5,000 cu.ft.	4 cans	2 cans	1 can
1 per 2,500 cu.ft.	8 cans	4 cans	2 cans



You may need to measure quantities of pesticides that are too small to be measured accurately with common measuring tools available at home. In this case, you should—

- ✓ Search for another pesticide product or a less concentrated form of the same pesticide.
- ✓ Find a more accurate measuring device, such as a graduated cylinder or a scale that measures small weights.



For More Information

For additional copies of this booklet, or for more information on subjects discussed in this booklet, contact—

EPA's Public Information Center (PIC), 401 M Street, SW, Washington, DC 20460 (Telephone: 202-260-2080); or the National Center for Environmental Publications and Information (NCEPI), P.O. Box 42419, Cincinnati, OH 45242-2419 (Telephone: 513-489-8190 or Fax: 513-489-8695).

PIC and NCEPI have the following free information available:

- ◆ *Healthy Lawn, Healthy Environment* (EPA 700-K-92-005).
- ◆ *Pesticides in Drinking Water Wells* (EPA 20T-1004).
- ◆ *Pest Control in the School Environment: Adopting Integrated Pest Management* (EPA 735-F-93-012).
- ◆ *Pesticides and Child Safety* fact sheet (English and Spanish) (EPA 735-F-93-050 and EPA 735-F-93-051).
- ◆ *Using Insect Repellents Safely* fact sheet (English and Spanish).
- ◆ *Safety Precautions for Total Release Foggers* fact sheet.
- ◆ NCEPI also has EPA's *National Publications Catalog 1995* (EPA 703-B-95-001) and the *Catalog of Office of Pesticide Programs (OPP) Publications and Other Information Media* (EPA 730-B-94-001).

Other sources for information about pesticides and pest control include—

- ◆ The National Pesticide Telecommunications Network (NPTN)—1-800-858-7378 (general public), 6:30 a.m.–4:30 p.m. Pacific time (9:30 a.m.–7:30 p.m. Eastern time) Monday–Friday. NPTN provides the following information:
 - ◆ Pesticide information.
 - ◆ Information on recognizing and managing pesticide poisonings.
 - ◆ Safety information.
 - ◆ Health and environmental effects.
 - ◆ Referrals for investigation of pesticide incidents and emergency treatment information.
 - ◆ Cleanup and disposal procedures, and much more.

- ◆ County Cooperative Extension Service offices are usually listed in the telephone directory under county or state government; these offices often have a range of resources on lawn care and landscape maintenance, including plant selection, pest control, and soil testing.
- ◆ State agriculture and environmental agencies may publish information on pests, pest management strategies, and state pesticide regulations. (See state contacts on pages 45–48.)
- ◆ Libraries, bookstores, and garden centers usually have a wide selection of books that identify various pests and discuss lawn care. Garden centers may also have telephone hotlines or experts available on the premises to answer gardening questions.
- ◆ The California Department of Pesticide Regulation's Environmental Monitoring and Pest Management Branch publishes a booklet on mail order sources of biological control organisms. Single free copies of *Suppliers of Beneficial Organisms in North America* are available by writing the Department at 1020 N Street, Room 161, Sacramento, CA 95814-5624. Telephone: 916-324-4100.
- ◆ Bio-Integral Resource Center (BIRC), a non-profit organization formed in 1978 through an EPA grant, has information on least toxic methods for pest management. Write to P.O. Box 7414, Berkeley, CA 94707.

EPA Addresses

Headquarters

U.S. Environmental Protection Agency
Office of Pesticide Programs (7506C)
401 M Street, SW
Washington, DC 20460
Telephone: (703) 305-5017
Fax: (703) 305-5558

EPA Regional Offices

U.S. EPA, Region 1
Air, Pesticides and Toxic Management
Division
State Assistance Office (ASO)
1 Congress Street
Boston, MA 02203
Telephone: (617) 565-3932
Fax: (617) 565-4939

U.S. EPA, Region 2
Building 10 (MS-105)
Pesticides and Toxics Branch
2890 Woodbridge Avenue
Edison, NJ 08837-3679
Telephone: (908) 321-6765
Fax: (908) 321-6788

U.S. EPA, Region 3
Toxics and Pesticides Branch (3AT-30)
841 Chestnut Building
Philadelphia, PA 19107
Telephone: (215) 597-8598
Fax: (215) 597-3156

U.S. EPA, Region 4
Pesticides and Toxics Branch
(4-APT-MD)
345 Courtland Street, NE
Atlanta, GA 30365
Telephone: (404) 347-5201
Fax: (404) 347-5056

U.S. EPA, Region 5
Pesticides and Toxics Branch (SP-14J)
77 West Jackson Boulevard
Chicago, IL 60604
Telephone: (312) 886-6006
Fax: (312) 353-4342

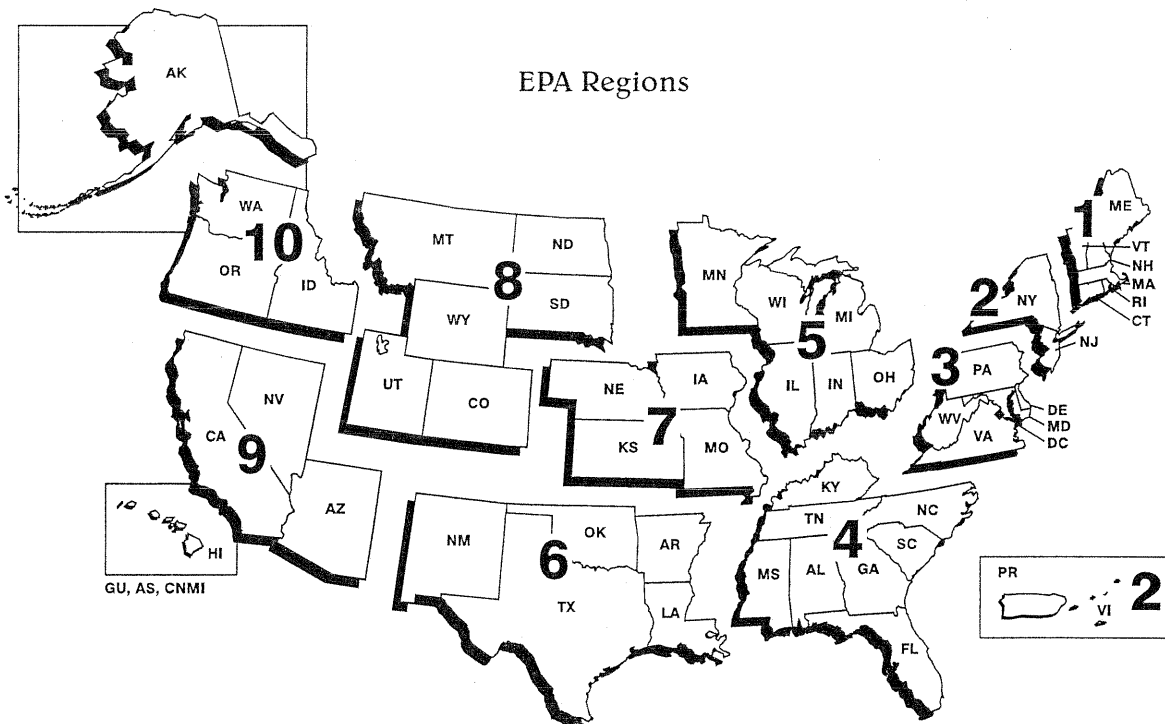
U.S. EPA, Region 6
Pesticides and Toxics Branch (6PD-P)
1445 Ross Avenue
Dallas, TX 75202-2733
Telephone: (214) 665-7240
Fax: (214) 665-7263

U.S. EPA, Region 7
Water, Wetlands and Pesticides Division
726 Minnesota Avenue
Kansas City, KS 66101
Telephone: (913) 551-7030
Fax: (913) 551-7065

U.S. EPA, Region 8
Air, Radiation and Toxics Division
(8ART)
One Denver Place, Suite 500
999 18th Street
Denver, CO 80202-2405
Telephone: (303) 293-1730
Fax: (303) 293-1229

U.S. EPA, Region 9
Pesticides and Toxics Branch (A-4)
75 Hawthorne Street
San Francisco, CA 94105
Telephone: (415) 744-1090
Fax: (415) 744-1073

U.S. EPA, Region 10
Pesticides and Toxics Branch (AT-083)
1200 Sixth Avenue
Seattle, WA 98101
Telephone: (206) 553-1091
Fax: (206) 553-8338



Addresses for State Pesticide Agencies

Region 1

Connecticut
 Director
 Pesticide Management Division
 Department of Environmental
 Protection
 79 Elm Street
 Hartford, CT 06106
 (203) 424-3369

Maine
 Director
 Board of Pesticide Control
 Maine Department of Agriculture
 State House Station #28
 Augusta, ME 04333
 (207) 287-2731

Massachusetts
 Chief
 Pesticides Bureau
 Massachusetts Department of Food
 and Agriculture
 100 Cambridge Street, 21st Floor
 Boston, MA 02202
 (617) 727-3000

New Hampshire
 Director
 Division of Pesticide Control
 New Hampshire Department of
 Agriculture, Markets and Food
 P.O. Box 2042
 Concord, NH 03302-2042
 (603) 271-3550

Rhode Island
 Chief
 Division of Agriculture
 Rhode Island Department of
 Environmental Management
 22 Hayes Street
 Providence, RI 02908
 (401) 277-2782

Vermont
 Director
 Plant Industry, Laboratory and
 Standards Division
 Vermont Department
 of Agriculture
 116 State Street
 Montpelier, VT 05602
 (802) 828-2431

Region 2

New Jersey
 Assistant Director
 Pesticide Control Program
 New Jersey Department of
 Environmental Protection
 CN 411
 Trenton, NJ 08625-0411
 (609) 530-4011

New York
 Chief
 Bureau of Pesticides and Radiation
 Division of Solid and Hazardous
 Materials Regulation
 New York Department of
 Environmental Conservation
 50 Wolf Road
 Albany, NY 12233-7254
 (518) 457-7482

Puerto Rico
 Director
 Analysis and Registration of
 Agricultural Materials
 Puerto Rico Department of Agriculture
 Agrological Laboratory
 P.O. Box 10163
 Santurce, PR 00908
 (809) 796-1735

Virgin Islands
 Pesticide Program Director
 8000 Nisky Center, Suite 231
 Estate Nisky, Charlotte Amalie
 St. Thomas, US VI 00802
 (809) 774-3320, ext. 135

Region 3

Delaware
 Deputy Secretary
 Delaware Department of Agriculture
 Division of Consumer Protection
 2320 South DuPont Highway
 Dover, DE 19901
 (302) 739-4811

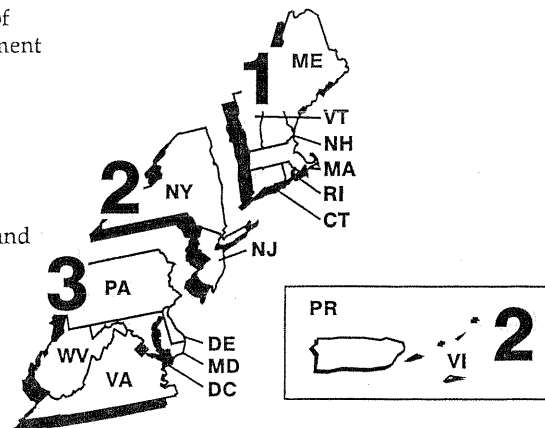
District of Columbia
 Program Manager
 Pesticide Hazardous Waste and
 Underground Storage Tank Division
 Environmental Regulation
 Administration
 Department of Consumer and
 Regulatory Affairs
 2100 Martin Luther King, Jr.
 Avenue, SE, Room 203
 Washington, DC 20020
 (202) 645-6080

Maryland
 Chief
 Pesticide Regulation Section
 Office of Plant Industries and
 Pest Management
 Maryland Department of Agriculture
 50 Harry S. Truman Parkway
 Annapolis, MD 21401-7080
 (410) 841-5710

Pennsylvania
 Chief
 Agronomic Services Division
 Bureau of Plant Industry
 Pennsylvania Department of
 Agriculture
 2301 North Cameron Street
 Harrisburg, PA 17110-9408
 (717) 787-4843

Virginia
 Program Manager
 Office of Pesticide Services
 Virginia Department of Agriculture
 and Consumer Service
 P.O. Box 1163
 Richmond, VA 23209
 (804) 371-6558

West Virginia
 Director
 Pesticide Division
 West Virginia Department of
 Agriculture
 1900 Kanawha Boulevard, East
 Charleston, WV 25305-0190
 (304) 558-2209



State Pesticide Agencies (cont'd)

Region 4

Alabama

Director
Division of Plant Protection and
Pesticide Management
Alabama Department of
Agriculture and Industries
P.O. Box 3336
Montgomery, AL 36109-0336
(334) 242-2656

Florida

Director
Division of Agricultural
Environmental Services
Department of Agriculture
and Consumer Services
3125 Conner Boulevard
Tallahassee, FL 32399-1650
(904) 488-3731

Georgia

Assistant Commissioner
Plant Industry Division
Georgia Department of Agriculture
19 Martin Luther King Drive, SW
Atlanta, GA 30334
(404) 656-4958

Kentucky

Director
Division of Pesticides
Kentucky Department
of Agriculture
100 Fair Oaks Lane
Frankfort, KY 40601
(502) 564-7274

Mississippi

Director
Bureau of Plant Industry
Mississippi Department of
Agriculture and Commerce
P.O. Box 5207
Mississippi State, MS 39762
(601) 325-3390

North Carolina

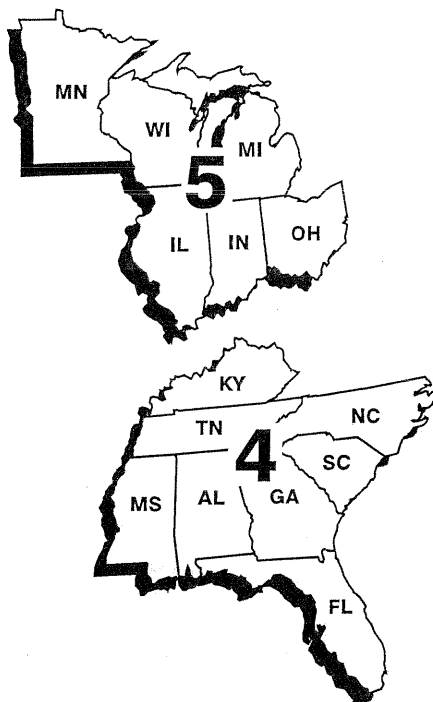
Assistant Pesticide Administrator
Food and Drug Protection Division
North Carolina Department of
Agriculture
P.O. Box 27647
Raleigh, NC 27611-0647
(919) 733-3556

South Carolina

Department Head
Department of Pesticide Regulation
257 Poole Agriculture Center
Clemson University
Clemson, SC 29634-0394
(803) 656-3171

Tennessee

Director
Plant Industries Division
Tennessee Department of Agriculture
P.O. Box 40627
Nashville, TN 37204
(615) 360-0130



Region 5

Illinois

Chief
Bureau of Environmental Programs
Illinois Department of Agriculture
P.O. Box 19281
Springfield, IL 62794-9281
(217) 785-2427

Indiana

Pesticide Administrator
Office of the Indiana State Chemist
1154 Biochemistry Building
Purdue University
West Lafayette, IN 47907-1154
(317) 494-1585

Michigan

Director
Pesticide and Plant
Management Division
Michigan Department of Agriculture
P.O. Box 30017
Lansing, MI 48909
(517) 373-1087

Minnesota

Director
Division of Agronomy Services
Minnesota Department of Agriculture
90 West Plato Boulevard
St. Paul, MN 55107
(612) 296-5639

Ohio

Specialist in Charge of
Pesticide Regulation
Division of Plant Industry
Ohio Department of Agriculture
8995 East Main Street
Reynoldsburg, OH 43068-3399
(614) 728-6987

Wisconsin

Administrator
Agricultural Resources
Management Division
Wisconsin Department of Agriculture
Trade and Consumer Protection
2811 Agriculture Drive
Madison, WI 53704
(608) 224-4546

State Pesticide Agencies (cont'd)

Region 6

Arkansas
 Director
 Division of Feeds, Fertilizer
 and Pesticides
 Arkansas State Plant Board
 #1 Natural Resources Drive
 Little Rock, AR 72205
 (501) 225-1598

Louisiana
 Director
 Pesticide and Environmental Programs
 Louisiana Department of
 Agriculture and Forestry
 P.O. Box 3596
 Baton Rouge, LA 70821-3596
 (504) 925-3763

New Mexico
 Chief
 Bureau of Pesticide Management
 Division of Agricultural and
 Environmental Services
 New Mexico State Department
 of Agriculture
 P.O. Box 3005, Department 3AQ
 New Mexico State University
 Las Cruces, NM 88003-0005
 (505) 646-2133

Oklahoma
 Director
 Department of Environmental Quality
 Plant Industry and Consumer Services
 Oklahoma Department of Agriculture
 2800 North Lincoln Boulevard
 Oklahoma City, OK 73105-4298
 (405) 271-1400

Texas
 Assistant Commissioner for
 Pesticides
 Texas Department of
 Agriculture
 P.O. Box 12847
 Austin, TX 78711
 (512) 463-7624

Region 7

Iowa
 Chief
 Pesticide Bureau
 Iowa Department of Agriculture
 Henry A. Wallace Building
 East 9th Street and Grand Avenue
 Des Moines, IA 50319
 (515) 281-8591

Kansas
 Director
 Plant Health Division
 Kansas Department of Agriculture
 109 S.W. 9th Street
 Topeka, KS 66612-1281
 (913) 296-2263

Missouri
 Director
 Bureau of Pesticide Control
 Missouri Department of Agriculture
 P.O. Box 630
 Jefferson City, MO 65102
 (314) 751-2462

Nebraska
 Director
 Bureau of Plant Industry
 Nebraska Department of Agriculture
 301 Centennial Mall
 P.O. Box 94756
 Lincoln, NE 68509
 (402) 471-2394

Region 8

Colorado
 Director
 Division of Plant Industry
 Colorado Department of Agriculture
 700 Kipling Street, Suite 4000
 Lakewood, CO 80215-5894
 (303) 239-4140

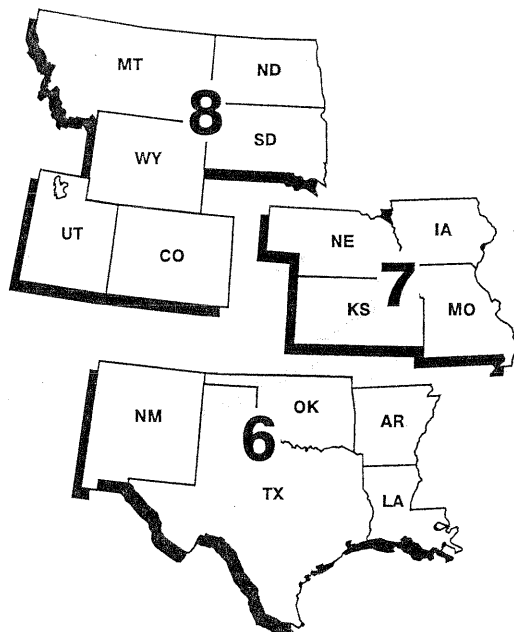
Montana
 Administrator
 Agricultural Sciences Division
 Montana Department of Agriculture
 P.O. Box 200201
 Helena, MT 59620-0201
 (406) 444-2944

North Dakota
 Director
 Pesticide Division
 North Dakota Department
 of Agriculture
 State Capitol, 600 East Boulevard,
 6th Floor
 Bismarck, ND 58505-0020
 (701) 328-4756

South Dakota
 Administrator
 Office of Agronomy Services
 Agricultural Services
 South Dakota Department of
 Agriculture
 Foss Building
 523 E. Capitol
 Pierre, SD 57501-3182
 (605) 773-4432

Utah
 Director
 Division of Plant Industry
 Utah Department of Agriculture
 Box 146500
 Salt Lake City, UT 84114-6500
 (801) 538-7180

Wyoming
 Director
 Technical Services
 Wyoming Department of Agriculture
 2219 Carey Avenue
 Cheyenne, WY 82002-0100
 (307) 777-6590



State Pesticide Agencies (cont'd)

Region 9

Arizona
 Director
 Environmental Services Division
 Arizona Department of Agriculture
 1688 West Adams
 Phoenix, AZ 85007
 (602) 542-3578

California
 Director
 California Department of
 Pesticide Regulation
 1020 N Street, Room 100
 Sacramento, CA 95814-5624
 (916) 445-4300

Hawaii
 Administrator
 Pesticide Programs
 Hawaii Department of Agriculture
 P.O. Box 22159
 Honolulu, HI 96823-2159
 (808) 973-9401

Nevada
 Director
 Bureau of Plant Industry
 Nevada Division of
 Agriculture
 350 Capitol Hill Avenue
 Reno, NV 89520
 (702) 688-1180

Guam
 Pesticide Program Director
 Guam Environmental
 Protection Agency
 P.O. Box 22439-GMF
 Barrigada, GU 96921
 (671) 472-8863

American Samoa EPA
 Office of the Governor
 American Samoa Government
 P.O. Box 2609
 Pago Pago, American Samoa 97699
 (684) 633-2304

**Commonwealth of the Northern
 Mariana Islands**
 Department of Public Works
 Division of Environmental Quality
 Commonwealth of the Northern
 Mariana Islands (CNMI)
 P.O. Box 1304
 Saipan, Mariana Islands 96950
 (670) 234-6984

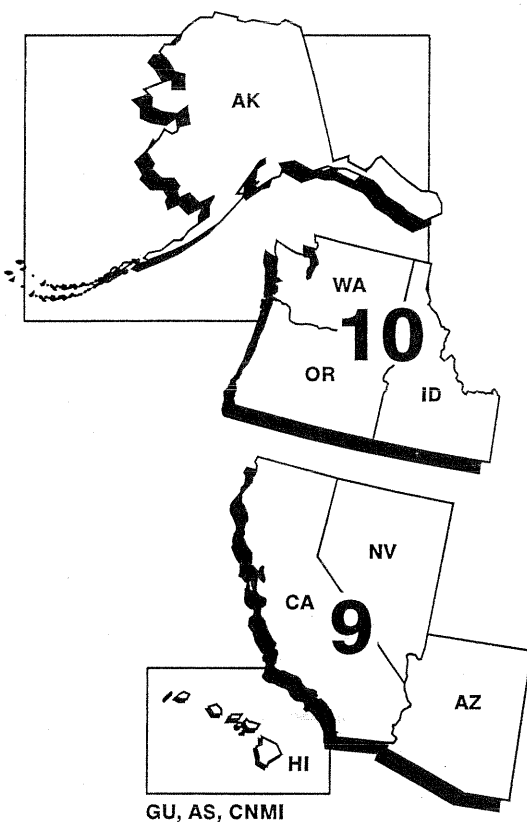
Region 10

Idaho
 Administrator
 Division of Agricultural Technology
 Idaho Department of Agriculture
 P.O. Box 790
 Boise, ID 83701-0790
 (208) 334-3550

Oregon
 Administrator
 Plant Division
 Oregon Department of Agriculture
 635 Capitol Street, NE
 Salem, OR 97310-0110
 (503) 986-4635

Washington
 Assistant Director
 Pesticide Management Division
 Washington State Department
 of Agriculture
 P.O. Box 42560
 Olympia, WA 98504-2560
 (360) 902-2010

Alaska
 Director
 Division of Environmental Health
 Alaska Department of
 Environmental Conservation
 410 Willoughby Avenue, Room 107
 Juneau, AK 99801-1795
 (907) 465-5280



Index

B

Beneficial Predators	11
Biochemical Pesticides	12
Biological Controls	11
Breeding Sites	7
Burns (chemical)	33

C

Caulking	6
Child-Resistant Packaging	23, 31
Children (safety)	20, 23, 30, 31
Compost	10

D

Dethatching Rake	10
Disease	7, 8
Disposal	24, 25

E

EPA Pesticide Incident Response Officer	35
--	----

F

Fertilize(r)	8, 9
First Aid	32, 33
eyes	33
inhalation	34
skin	33
swallowing	33
First Aid After Poisoning	34, 35
Foggers (Total Release)	21

G

Gardening	7
Grass Type	9
Ground Water	21

I

Indoor Prevention	6
Integrated Pest Management (IPM)	3

L

Lawn Care	8-10
-----------------	------

M

Manual Methods	12
Measuring	18
Microscopic Pathogens	12
Mixing	18, 19, 21
Mowing	9
Mulch	8

N

Non-Chemical Pest Controls	11, 12
----------------------------------	--------

O

Outdoor Prevention	7
--------------------------	---

P

Parasitoids	11
Pathogens	12
Pest Control Company	36-38
Pesticide Product Types	2
Pets	20
bathing	6
poisoning	34
Poisoning	32-35
eyes	33
inhalation	34
skin	33
swallowing	33

S

Seeds	7
Soil	7-9
Storing	23

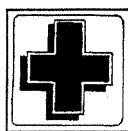
T

Thatch	9
Tiller	8

“Help! Someone’s Been Poisoned!” What To Do in a Pesticide Emergency



If the person is unconscious, having trouble breathing, or having convulsions . . .
ACT FAST! Speed is crucial.



Give needed first aid immediately.



Call 911 or your local emergency service.
If possible, have someone else call for emergency help while you give first aid.



If the person is awake or conscious, not having trouble breathing, and not having convulsions . . .



Read the label for first aid instructions.



Call a doctor, a poison control center, a local emergency service (911), or the National Pesticide Telecommunications Network (toll free at 1-800-858-7378).



Give first aid.